

# BMWED

BROTHERHOOD OF MAINTENANCE OF WAY EMPLOYEES DIVISION  
of the International Brotherhood of Teamsters

## JOURNAL

Volume 125 ■ Number 1

www.bmwe.org

January-February-March, 2016



## Northeastern System Federation members strike on the D&H

*Action a success: CP agrees to make correction to paychecks*

Brothers and Sisters on the BMWED Northeastern System Federation conducted a successful strike action March 7, 2016 in response to unaddressed payroll issues on Canadian Pacific's Delaware & Hudson Railway.

The strike began at 6 a.m. and caught CP by surprise. By 2 p.m., NESF General Chairman Dale Bogart called an end to the walkout after railroad management agreed to a meeting and the 80-plus members of the D&H returned to work.

The meeting between CP and BMWED officials occurred the following week, where Brother Bogart said the railroad set up more consistent protocol to address payroll issues and dedicated at least three payroll employees to resolve future problems. Correction checks to employees have begun, Brother Bogart said.

BMWED members on the D&H were having issues with their paychecks going back to last year. Those problems included shortages on hours worked, accuracies in payment at the correct hourly rates, being paid incorrectly or not at all for holidays and vacations, and having health insurance and supplemental sickness benefits deprived while on medical leave of furlough.

Brother Bogart said repeated attempts to rectify these shortchanges were disregarded by



CP until the strike on March 7. He said if CP had responded to a letter sent from BMWED to the railroad on Feb. 9 asking to meet and correct employee payroll problems, a strike action would not have been necessary.

"As a result of our strike, CP is finally starting to take this issue seriously," Brother Bogart said. He added that the railroad has begun the process of cutting checks to members for missed payments. "No one wants to strike, but at some point, when you're not getting paid, you're forced to take a stand."

Brother Bogart said the quick resolution was



BMWED members on Canadian Pacific D&H Railway struck March 7 over payroll issues. The matter was resolved by day's end.

ideal and the successfulness of the strike was a team effort.

"At the end of the day, what I think the moral of the story is, when we organize and when we stick together as one, we get the respect we deserve," Bogart said.

BMWED President Freddie Simpson agreed. "I'm proud of our Brothers and Sisters on the D&H. Going on strike is a last resort. It takes courage to stand up to your employer and these members on the Northeastern System Federation did just that. I'm encouraged by their success and the result they achieved. Their strike is proof that we are strongest when we stick together."

## Unions/NJT reach agreement and avoid strike

*BMWED negotiates as part of multi-union coalition*

The Commuter Railroad System Division (CRSD) of the BMWED reached an eleventh-hour tentative agreement March 11 with New Jersey Transit Rail Operations, avoiding a strike that would have affected tens of thousands of commuters into New York City.

The CRSD negotiated the contract, which

had not been ratified as of press time, as part of a labor coalition that consisted of every railroad union on the NJT property. The historic show of union solidarity resulted in a strong contract for members in the face of stiff pushback from NJT management and New Jersey Gov. Chris Christie. Over 4,000 union employees worked on

the NJT for nearly five years without a contract.

The BMWED was represented

Continued on Page 2







# Keep up with BMWED on facebook

*For the latest News, Photos, Job Openings, and Everything Brotherhood*

Log on to [www.facebook.com](http://www.facebook.com)



Search for "Brotherhood of Maintenance of Way Employees"

And **LIKE** our page!



## Change of Address Request

Please remember to notify your System Office or the National Division of any change of address or telephone number. It is vital that this information be kept current. Railroad employers do not always provide this information to the BMWED. Phone numbers can be found at [BMWE.org](http://BMWE.org).

Union/NJT, From Page 1

in negotiations by CRSD General Chairman Mick Barrett and BMWED Northeast Region Vice President Seán Gerie.

"We are very proud of the work that we did here obtaining this agreement. The members stood with us and they got a contract that they deserved," Brother Barrett said. "We are going to put it in their hands now through the ratification process. We thank them for their patience and fortitude through this long, hard process."

Brother Gerie said the following: "This is the perfect example of trade unionism. The members stood with their unions and the unions fought like hell for the members. The Governor sorely underestimated us and thought he could just bully his way through this. We proved him wrong."

Details of the agreement will be released after CRSD membership has a chance to review it.

## BMWED Division JOURNAL CONTENTS

January-February-March, 2016 ■ BMWED DIVISION JOURNAL ■ VOLUME 125 ■ NUMBER 1  
The BMWED Journal is the official news publication of the Brotherhood of Maintenance of Way Employees Division of the International Brotherhood of Teamsters

**Freddie N. Simpson**  
President and Editor

**Perry K. Geller, Sr.**  
Secretary-Treasurer

**C. Clark Ballew**  
Associate Editor

The BMWED Journal (ISSN 1049-3921/USPS 067460) is published bi-monthly – 6 times annually at 41475 Gardenbrook Road, Novi, MI 48375-1328. Periodicals postage paid at Southfield, Michigan and additional mailing offices.

### ATTENTION POSTMASTER

Send address changes to BMWED, 41475 Gardenbrook Road, Novi, Michigan 48375-1328.

Subscription Price: U.S. and Canada—\$20.00 (U.S.) per year, in advance.

[www.bmwed.org](http://www.bmwed.org)

Northeastern System Fed members strike on the D&H .....	1	2016 National Negotiations Survey Report .....	8
Unions/NJT reach agreement and avoid strike ....	1	Bobby family honored at the U.S. Senate .....	8
Keep up with BMWED on Facebook .....	2	BMWED Directory .....	9 - 12
BMWED Arbitration Director .....		Death Benefit Department .....	13
Gary Hart retires .....	3	Job Opening .....	13
Union Pacific Railroad Workers .....	3	President's Perspective .....	14
QR Codes .....	3	Roll of Honor .....	15 - 17
Secretary-Treasurer's Report .....	4	FAMES .....	18 - 19
A Reminder on Holiday Rules .....	4	Apple and Android Setup Instructions .....	18
Brotherhood Awards 2015 BMWED Scholarships ....	5	A Vice President Speaks .....	19
Around the Brotherhood .....	6	2016 Local Lodge Officer Training Seminars .....	19
Retirement Changes During 11/01/2015 to 01/31/2016 .....	7	Statement of BMWED on Amtrak Collision in Chester, PA .....	20



© BMWED 2016 All rights reserved.

## QR Codes

A QR code (Quick Response Code) is a two-dimensional code that can be scanned with a mobile phone to gain access to specific information via the mobile web.



## How to Use QR Codes

To access the information, you will need to download one of several free QR Code reader apps on your smartphone. When you see a QR Code, focus your camera on the image and the application will recognize the code and automatically open up the link to display the web content.

facebook



Scan me to Visit  
BMWED on  
Facebook!

twitter



Scan me to Visit  
BMWED on  
Twitter!



# BMWED Arbitration Director Gary Hart retires

BMWED Director of Arbitration Gary Hart retired this January, culminating a long and distinguished Union and railroad career.

"Brother Gary is a committed and dedicated leader in our Brotherhood and will be sorely missed, but I wish him all the best in his retirement," BMWED President Freddie Simpson said. "You didn't have to be around Gary long before you recognized that he came to work every single day to serve, advance and protect the rights of his fellow brothers and sisters on the railroad. He is a proud Union man and a good Brother, and our Union will miss his dedication and service."

Brother Hart began his railroad career in 1975 on the old Chicago & North Western, holding positions of Trackman, Machine Operator, Truck Driver, Assistant Track Foreman, Track Foreman and Track Inspector. He also served stints as President and Local Chairman out of Lodge 1847 and on the C&NW System Federation Joint Protective Board.

In his 13 years of service with the Brotherhood's Arbitration Office in Chicago, Brother Hart first served as a staff assistant, then

as our Union's member of the National Railroad Adjustment Board Third Division, and finally as the department's Director for the last two years.

In retirement, Brother Hart is looking forward to traveling with his wife of 30-plus years, Derith, and spending time invested in hobbies.

Congratulations, Brother Gary and enjoy your well-earned retirement!



Gary Hart (left) is congratulated by President Simpson.

## QR Codes

A QR code (Quick Response Code) is a two-dimensional code that can be scanned with a mobile phone to gain access to specific information via the mobile web.



Scan me to Visit the BMWED website!



Scan me to Visit BMWED on Facebook!

## How to Use QR Codes

To access the information, you will need to download one of several free QR Code reader apps on your smart-phone. When you see a QR Code, focus your camera on the image and the application will recognize the code and automatically open up the link to display the web content.

## Union Pacific Railroad Workers Represented by Nichols Kaster, PLLP File Class Action Complaint Alleging Systematic Violations of the Americans With Disabilities Act

On February 19, 2016, six current and former employees of Union Pacific Railroad Company filed a class action lawsuit in the Western District of Washington at Seattle (Case No. CV15-1865JCC), asserting that Union Pacific engaged in a pattern and practice of discrimination in violation of the Americans with Disabilities Act ("ADA"), 42 U.S.C § 12101 *et seq.*

The case[1] alleges that Union Pacific has put numerous long-time employees out of work due to their actual or perceived disabilities even though they could perform their jobs. The suit explains that Union Pacific requires certain employees to disclose particular health events or conditions. Once an employee makes such a disclosure, Union Pacific removes the employee from service and conducts a so-called "Fitness-for-Duty" procedure, but the employees allege that this evaluation does not assess whether an employee can perform the essential functions of their job.

The employee is not even physically evaluated, and Union Pacific routinely disregards the opinions of treating doctors who do evaluate the employee. Instead, Union Pacific collects extensive medical information from the employee and conducts a "file review" of the information. Plaintiffs allege that Union Pacific then mines the medical information and disqualifies the employees from service—either by deeming them "medically disqualified" or by issuing permanent, unnecessary work restrictions that it then refuses to accommodate.

The six named plaintiffs allege that Union Pacific discriminated against them through this

"Fitness-for-Duty" protocol. The plaintiffs include the following employees, all of whom were taken out of service by Union Pacific:

- An individual who has had a pacemaker for more than 20 years as a Union Pacific employee, who had never had a work-related incident as a result;
- An individual with fully-controlled epilepsy who had never had a work-related incident as a result;
- An individual who had lightheadedness on a few isolated incidents outside of work;
- An individual with a fully-controlled heart condition who never had a work-related incident;
- An individual with fully-controlled seizure disorder; and
- An Iraq War veteran formerly diagnosed with PTSD who never had a work incident as a result.

Plaintiffs seek to certify a class of: "Individuals who were removed from service over their objection, and/or suffered another adverse employment action, during their employment with Union Pacific for reasons related to a Fitness-for-Duty evaluation at any time from 300 days before the earliest date that a named Plaintiff filed an administrative charge of discrimination to the resolution of this action."

Plaintiffs' Counsel James H. Kaster stated, "Our clients were capable of performing the essential functions of their jobs, and in fact were doing their jobs safely for a long time. In most cases, they never had a work related incident as a result of their conditions, and their treating

doctors informed Union Pacific they were fit to work. Nevertheless, Union Pacific apparently stopped them from working because they had once been diagnosed with certain conditions. Railroads are not exempt from the Americans with Disabilities Act and the ADA prohibits discrimination against disabled employees who can perform the essential functions of their jobs."

The plaintiffs are represented by James H. Kaster, David E. Schlesinger, Bonnie M. Smith, Nicholas D. Thompson and Charles A. Delbridge of Nichols Kaster, PLLP; Bradley W. Wahrlich and Kristoffer S. Mayfield of Hildebrand McLeod and Nelson; and Joseph A. Grube and Karen K. Orehoski of Breneman Grube Orehoski, PLLC.

For more information please visit the Nichols Kaster website at [www.nka.com](http://www.nka.com).







Perry K. Geller, Sr.

# SECRETARY-TREASURER'S REPORT

## Fighting for crumbs: the myth of "Trickle Down" economics

As we enter into this presidential election year, we are hearing a lot of rhetoric from all sides regarding the plight of working Americans and the vanishing middle class. We hear politicians promise they are going to create millions of jobs, raise stagnant wages, rebuild the middle class and "Make America Great Again."

However, when you get beyond the rhetoric and look at their platforms, one party in particular gleefully touts cutting taxes for the rich; rolling back regulations that protect the environment, the financial system, and the workforce, slashing social programs such as Medicaid, Medicare, Social Security and Railroad Retirement; and implementing Right-to-Work laws nationwide. Such regressive policies will not raise the middle class; they will only further our demise and widen the divide between the wealthy and the rest of us.

History shows that the "trickle-down theory" of economics is a fallacy contrived by the rich to serve the rich. Yes, cutting taxes for the rich and

reducing regulations will undoubtedly put more money in the pockets of corporations and the wealthy. However, there is nothing that will magically make corporations and the rich "trickle-down" a share of that windfall to the workers who build that wealth on the shop floor, on the railroads, or in any other workplace in America. The rich did not get rich by giving money away; they got rich largely by exploiting workers, hoarding their wealth, and keeping it close. Putting more dollars in the pockets of the wealthy is not going to put one thin dime in your pocket or in the pocket of any other American worker.

In the post-World War II era, unionization in the United States was close to 40 percent of the workforce. During the decades that followed, the United States was the dominant economic power in the world and the first country to have a middle-class majority. When U.S. labor unions were at their strongest (1947-1972), worker productivity and family median incomes both rose exponentially and the American Dream was

alive and well. Today, with private sector unionization at 7 percent and public unions under relentless attack, virtually all those gains have been wiped out and U.S. income inequality is growing at the fastest rate since the Great Depression. Today, the top 1 percent owns as much wealth as the bottom 90 percent and American working families are falling farther and farther behind.

So how does the American worker get his or her piece of the pie and truly make America great again? The same way our forefathers did it: *Unionize, Organize, and Collectively Bargain* for a fair share of the wealth our labor creates for others. Wealth won't just "trickle-down" on its own, and politicians can't fix that. Only workers and their unions, fighting together, can carve out their slice of the economic pie. There is no magic to it and there is no other way. We either fight for our slice together as unionists and voters; or fight over the meager crumbs that fall from the table of the rich and powerful.

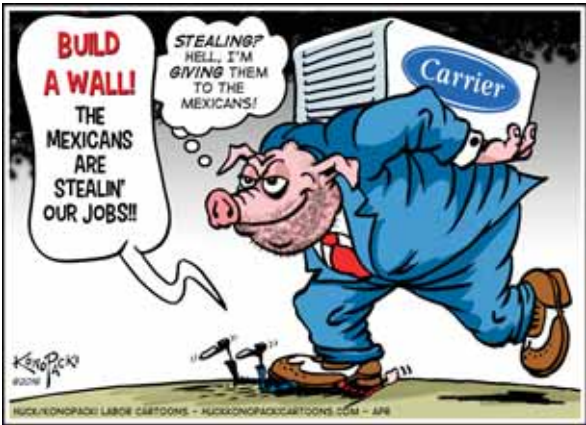
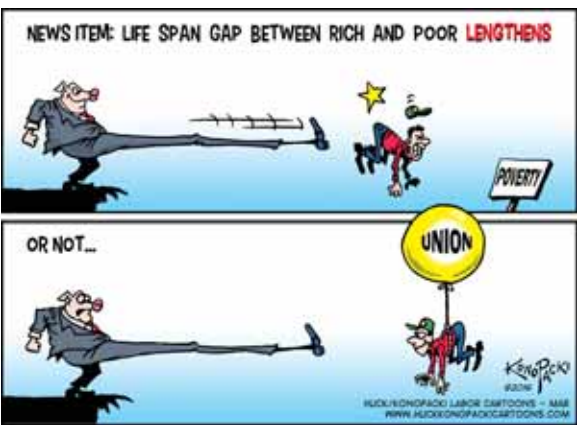
## A Reminder on Holiday Rules

If you are a furloughed employee of a railroad covered by the U.S. National Agreement with at least 60 days of seniority or 60 calendar days of continuous service preceding a covered holiday, and if you had compensation paid by the carrier credited to 11 or more of the 30 calendar days immediately preceding the holiday, you may be entitled to pay for that holiday even though you are furloughed.

For detailed information contact your General Chairperson.

### The complete list of holidays are:

- New Year's Day • President's Day • Good Friday • Memorial Day • Fourth of July • Labor Day
- Thanksgiving Day • Day after Thanksgiving • Christmas Eve (the day before Christmas is observed)
- Christmas Day • New Year's Eve (the day before New Year's Day is observed)



# Brotherhood Awards 2015 BMWED Scholarships

The Brotherhood is pleased to announce the two winners of the 2015 BMWED Annual Scholarship Award. BMWED scholarships were recently awarded to Alexandria M. Grow and Erik M. Vazquez. Each scholarship award is in the amount of \$2,000.

Alexandria M. Grow is currently a student at Tompkins Cortland Community College in Dryden, New York. She graduated from Gilbertsville - Mount Upton High School in Mount Upton, New York in June 2015. Grow plans to pursue a career as a history teacher at the high school or college level.



Grow is the daughter of Brother Timothy M. Grow, member of Northeastern Federation Local Lodge 1632 from Mount Upton,

New York, who has been a member of the BMWED since 2003.

Grow has participated in extracurricular activities including cheerleading, drama club and SADD (Students Against Destructive Decisions). She has also volunteered at a no-kill animal shelter and a town fair to support the local fire department.

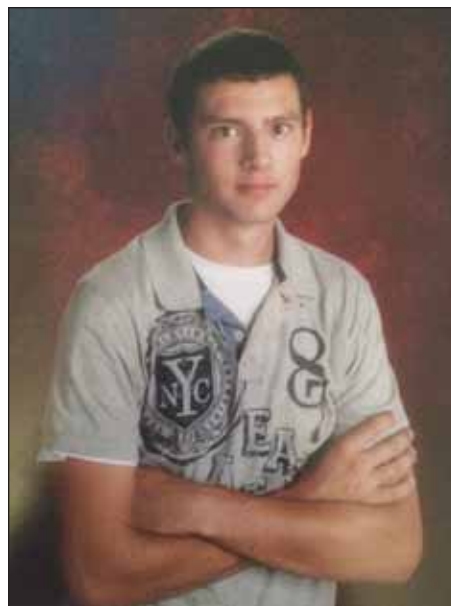
According to Grow, her dad's membership in the BMWED means stability for her and her younger siblings. "Thanks to the BMWED, my family will continue to have a stable income, a consistent living environment, and my siblings will be able to have their dad put them to bed each night," Grow said.

Grow said she was incredibly happy to find out she would receive the award. "This scholarship helps me get through the semester," she said. "Thank you so much for choosing me. It makes all the difference in my life."

Erik M. Vazquez is a student attending Greeley County High School in Tribune, Kansas. He will graduate in May 2016 and plans to attend Fort Hays State University in Hays, Kansas, followed by Kansas State University. He plans to pursue a career in drafting or mechanical or electrical engineering.

Vazquez is the son of Brother Octavio Vazquez, Sr., from Tribune, Kansas, who has been a member of

Unified System Division Local Lodge 1216 since 2005.



Throughout high school, Vazquez has pursued many extracurricular activities, including SADD, golf, football, basketball and holding class office. He has volunteered for Meals on Wheels and several blood drives, among other causes. Vazquez has spent his summers as a cattle feeder maintainer, general construction worker, self-employed lawn care worker and farm laborer.

His father's BMWED membership has ensured that his father has the safest and most comfortable working environment possible, according to

Vazquez. "I know my family can rely on the union to negotiate for everything that will keep my dad safe on the job," he said.

Vazquez also said he is thankful that his dad can work in an environment free from discrimination and harassment. "My father is a naturalized citizen, originally from Mexico, and has been subject to a variety of forms of discrimination during his lifetime," Vazquez said. "The railroad is the first job he's had where not only is discrimination not tolerated, but where he knows he'll have a strong advocate in the BMWED should he ever encounter such an occasion."

When he found out he would be a scholarship recipient, Vazquez said he was overjoyed. "This scholarship is something I feel very proud of, and the money really helps my family with tuition costs," he said.

The BMWED annual scholarship is designed to encourage and recognize the achievements of BMWED members and their dependents and assist them in obtaining a college education, with preference to those who are studying labor-related subjects. The scholarship is typically awarded in November of each year. Application dates are announced in the BMWED Journal and on the website at [www.bmwed.org](http://www.bmwed.org).

**BMWED is proud to announce our 2015 Scholarship Award winners in this edition of the Journal. There were a number of highly qualified applicants which made this year's selection process extremely challenging.**

The BMWED Scholarship requires each applicant to submit an essay of 300 words or less describing "How the BMWED has impacted my life." Below are some selected excerpts drawn from student essays submitted with their BMWED Scholarship applications. All excerpts are from children and dependents of BMWED members. The National Division Officers take this opportunity to congratulate all the applicants for their insightful observations about the role of the BMWED in their lives.

\*\*\*

"The BMWED carriers out many actions that I hope to employ in my future such as collectively bargaining for workers rights, ensuring equality at work, and protecting those without a voice. The protection the BMWED gives my father enables him to have a safe, stable, and inviting work environment. This in turn allows him to support me and my dreams both emotionally and financially."

**Victoria M. - Odum, GA.**

"In asking how these things have impacted my life, it is more honest and humbling to say that they have done nothing short of wholly enabling my life."

**Adam H. - McCalla, AL.**

"Throughout his career, he has had a steady job, making a good wage, with good benefits, all of which are hard to find these days. I know it has been due to the tireless efforts of the BMWED, who work tirelessly to ensure that their members have the best and safest jobs possible."

**Hannah H. - Kitts Hill, OH.**

"The BMWED has, over the years, allowed my father, and my family, job security. Our family is able to follow our dreams, not only because my father is an extremely hard worker, but because the BMWED has provided the security of my father's employment and ensured that he makes fair wages for all the hard work he does. I

think I speak for my entire family when I say, we can't thank the BMWED enough for allowing us to live the American Dream without worry."

**Selena A. - Lincoln, NE.**

"The BMWED has a track record of looking out for its employees and championing the rights of the worker, and I am sure that they have played a major role in the current level of safety and rights that laborers across the country now enjoy. I come from the south, and Unions don't always have a positive connotation where I'm from, but I can genuinely say that unions like the BMWED have only ever had the best interests of my dad and my family at heart. You have kept my dad safe over the years and you have protected his rights and the rights of workers like him for years."

**Trevor M. - Fayetteville, GA.**

"Without his hard work and the BMWED, I don't think I'd have the opportunity to make my dad proud as a college student. With the

Brotherhood of Maintenance of Way my dad has been able to support me and my dreams of becoming an oral surgeon."

**Kirstan H. - Sioux Falls, SD.**

"The Brotherhood of Maintenance of Way Employees Division has impacted my life by helping ensure safe travel via railways throughout the country."

**Dallin E. - Hamilton Square, NJ.**

"The BMWED is one thing that helps keep my mind at ease. The BMWED is helping me get through college mainly because it provides my dad with a safe working environment while also guaranteeing him a job. I don't have to wonder about if my tuition will be paid for nursing school and this is all thanks to the union. I know my dad will be taken care of because not only does the BMWED take care of him while he's on the job but also long after he is gone."

**Heather M. - Odum, GA.**

Continued on Page 8





# Around the Brotherhood

## BMWED CRSF Lodge 166 elects Lodge Officers

BMWED CRSF Local Lodge 166 met in Battle Creek, Michigan on Jan. 30 to elect Lodge Officers and conduct traditional union business.



## CRSF Local Lodge 109 hosts meeting

Members of BMWED CRSF Local Lodge 109 met for a regular meeting earlier this year and posed for a photo to show off their solidarity. Looking great, Brothers!



## Allied Local 2163 Brother Everett Griffin retires

Congratulations to Brother Everett Griffin on his retirement after 36 years of service and BMWED membership. Brother Griffin is a member of the Allied Federation's Local Lodge 2163 in Waycross, Georgia. Here he is pictured receiving his retirement certificate from Allied Vice General Chairman Russell Farmer.



## BMWED Penn Fed Local 3082 hosts meeting

Members of BMWED Penn Fed Local Lodge 3082 held a regular meeting last year. According to Lodge President Jason Ruperto, members in attendance were rewarded with Brotherhood t-shirts.



## BMWED Affiliated System Local Lodge 1464 draws big crowd

Brother Ken Akers sends in this photo of his most recent Local Lodge meeting (BMWED Affiliated System Fed Local 1464, Fort Gay, W.Va.) and he's laying down a challenge to other lodges to beat the attendance. By our count, there's over 60 Brothers at this meeting (including a cute, little special guest front and center).

Thank you, Brother Ken, for the photo and quite an impressive showing of solidarity to the Brothers of Lodge 1464!



## USD Local 216 marches in Omaha parade

BMWED Unified System Division Local Lodge 216 members and their families marched with our Brotherhood banner last Labor Day in Omaha, Nebraska. Union pride on full display!



You can now visit the BMWED on *Facebook* at **Brotherhood of Maintenance of Way Employees**, and follow us on *Twitter* at **BMWEDIBT**.





**Learn more about the Teamsters Human Rights Commission and how you can participate.**

**Contact BMWED Vice President Roger Sanchez at (281) 354-4812 or by email at [lodge1507@aol.com](mailto:lodge1507@aol.com).**







## The Results are in!

### 2016 National Negotiations Survey Report

In March, 2015 the Brotherhood's Communication Action Team (CAT) began visiting railroad worksites around the country. The CAT focused on gathering member input with a Contract Survey. With National Negotiations in their very early stages, the BMWED leadership wanted to know your perspective on what issues are most important.

After twelve months of energetic member engagement, the CAT has brought the Survey process to an end. We are thrilled to report that we've gathered over 9,000 Surveys from every corner of the country. Please review the following numbers:

- Worksites visited: 780
- Surveys collected: 9,202
- Survey results:
  - Health care as the #1 issue: 53%
  - Wages as #1 issue: 24%
  - Additional paid time off as #1: 9%
  - Safety as #1 issue: 6%
  - Travel pay as #1: 4%
  - No response: 4%

In addition to the results above, members selected Health Care as a #2 issue on 23% of surveys, while Wages as a #2 issue received 39%. Since our last report in September, 2015 these two issues have held steady as the primary concerns of our membership. As a result, we will be focusing our energies on these issues at the negotiating table, and on the job thru the CAT.

(It is also important to note that hundreds of members wrote notes on the Surveys about their concerns regarding Contractors on the property. Needless to say, this is a deep concern of leadership on all levels, and is being addressed by Federation officers.)

The CAT is currently preparing for the next phase in its work. In the coming weeks we will launch a full-scale education and action program around defending our health care. The Carriers' attacks on our healthcare benefits promise to be vicious in this round of bargaining. To defend what we have – which has been the overwhelming feedback of members in the Surveys – we'll have to tool up and prepare.

As 2016 progresses, the 540 Front Line Communicators who make up the CAT will be working with the Internal Organizers to get the word out about the next phase. We'll begin with conversations about how we've won the benefits we have, and who our enemies are who want to take them away. By early summer we anticipate a day of national unity where we show the Carriers that the BMWED is united on the issue of healthcare.

If you are interested in joining the CAT's organizing, please reach out to your General Chairperson or the CAT Internal Organizing Coordinator and let them know you are interested in more information. The CAT Coordinator is Carey Dall and he can be reached by email at [cdall@bmwe.org](mailto:cdall@bmwe.org).

We encourage all members to print this Report out and share it with coworkers. Please contact us if you have any questions. Thank you.



## Congressional Record

PROCEEDINGS AND DEBATES OF THE 114<sup>th</sup> CONGRESS, FIRST SESSION

Vol. 161

WASHINGTON, TUESDAY, JULY 21, 2015

No. 114

### Senate

#### RECOGNIZING THE BOBBY FAMILY OF ROSCOE, SOUTH DAKOTA

Mr. ROUNDS. Mr. President, today I wish to recognize the Bobby family from Roscoe, SD, for their work in railroad service. Roger, Duane, Albert, Bill, and Dale—led by their late father La Vern Bobby—have served a combined total of 232 years with the railroad industry. The six men have worked with Chicago, Milwaukee, St. Paul, and Pacific Railroads, all serving in the Maintenance of Way department throughout their careers.

Following La Vern, who joined railroad service in 1955 after serving on a U.S. Navy destroyer in World War II, the Bobby boys have dedicated their lives to the railroad. Their railroad service has spanned across a variety of Midwestern States, including South Dakota, Minnesota, and Illinois. They have made many sacrifices, frequently traveling, moving, and leaving their families at home to fulfill their duties with the railroad.

The entire Bobby family deserves recognition for their hard work ethic, patriotism, and service to the railroad system. I extend my sincere gratitude and appreciation to the Bobby family for their dedication to an industry that is vital to our economy by connecting our country and transporting goods. I hope that the Bobby legacy will continue to thrive with the generations to come.

Pages 9 - 12 contain the official directory of the National Division and System Officers and State Legislative Directors of the BMWED as of March, 2016. The directory is published twice annually.

## Bobby family honored at the U.S. Senate

No doubt, longtime members of the BMWED will remember the Bobby family. The late patriarch, Lavern Bobby and his five sons, Roger, Duane, Al, Bill and Dale, together combined for 232 years of dedicated railroad service, all in the maintenance of way craft. Brother Roger Bobby served our Brotherhood for 30 of his 42 railroad years, retiring as Vice Chairman/Secretary-Treasurer of the Burlington

Northern System Federation in September 2008.

When the last of the Bobby family line retired from the railroad last year (the youngest son, Dale, retired from CP Railroad on May 30), it culminated the Bobby family's impressive run of railroad employment — and caught the eye of the United States Congress.

The Bobby's are originally from Ipswich and grew up in Roscoe,

South Dakota. With that in mind, U.S. Sen. Mike Rounds of South Dakota presented a Congressional commendation to the Senate, which you can read above.

With the greatest of respects, our Brotherhood recognizes the Bobby family and their dedicated service to the railroad and our Union. Much congratulations for six proud careers well served.

### How the BMWED has impacted my life, From Page 5

"Having a father who belongs to the BMWED for over 30 years has impacted my life in many ways. The most prominent way is because of my father receiving higher wages and better benefits. Our family's receives better health, dental, and vision benefits because BMWED negotiates for better contracts. In addition, his working conditions and environment has become much safer for him to work."

Heather P. – Grand Island, NE.

"BMWED-represented members and their dependents not only have better health insurance than non-union workers, but they also earn significantly higher wages and have better, safer work rules through collectively bargained agreements. BMWED members earn higher hourly rates, and eligible for overtime prior to working a full scheduled 40-hour work week, and have a safer work environment than non-represented employees. This translates into BMWED members earning more income in less hours than non-

represented railroad workers, and coming home safely every night to their families."

Zachary C. – Berkley, MI.

"I have a long history of the "Railroad Life". My mother grew up as a railroad kid with her father working for BNSF Railway for 43 years. Yes it was hard work, but there were "benefits" - retirement income, health insurance for the families; and they had the BMWED to back them, to help them keep jobs, to help them have safety measures to prevent from being hurt or even

killed, and to represent them in receiving decent wages for their hard work."

Matthew T. – Chillicothe, TX.

"The BMWED can make such a massive difference on how I prepare for entering the fields of engineering and architecture. It would be highly influential personally, because I will be able to carry on the name of BMWED as a supporter."

David C. – Houston, TX.



# BMWED

# DIRECTORY

## THE OFFICIAL DIRECTORY OF THE BMWED NATIONAL DIVISION & SYSTEM OFFICERS AND STATE LEGISLATIVE DIRECTORS AS OF MARCH 2016

### FREDDIE N. SIMPSON

*President*  
[fns@bmwe.org](mailto:fns@bmwe.org)

### PERRY K. GELLER, SR.

*Secretary-Treasurer*  
[pkg@bmwe.org](mailto:pkg@bmwe.org)

### VICE PRESIDENTS

### DAVID D. JOYNT

*Vice President At-Large*  
354 Sunset Drive  
Doniphan, NE 68832  
(402) 845-2268 • Cell (402) 984-6937  
Fax: 402-845-2268  
[ddj@bmwe.org](mailto:ddj@bmwe.org)

### Northwest Region

### BRUCE G. GLOVER

*Vice President*  
510 1st Avenue North #601  
Minneapolis, MN 55403-1609  
(612) 332-7947  
Cell: (612) 819-1792  
[bggloverbmwe@bitstream.net](mailto:bggloverbmwe@bitstream.net)

### South Region

### ROGER D. SANCHEZ

*Vice President*  
P.O. Box 2250  
Porter, TX 77365  
(281) 354-4812  
Fax: 281-354-6613  
[ldodge1507@aol.com](mailto:ldodge1507@aol.com)

### West Region

### DAVID R. SCOVILLE

*Vice President*  
P.O. Box 141845  
Spokane Valley, WA 99214  
(509) 227-7295  
Fax: 509-474-0386  
[drscoville@bmwe.org](mailto:drscoville@bmwe.org)

### Northeast Region

### SEÁN D. GERIE

*Vice President*  
P.O. Box 325  
Feasterville, PA 19053-9997  
(267) 358-5904  
Fax: 267-358-5915  
[sgerie@bmwe.org](mailto:sgerie@bmwe.org)

### EXECUTIVE BOARD

### STACI MOODY-GILBERT

*Secretary*  
747 N. Burlington Avenue, Suite 312  
Hastings, NE 68901  
Cell: (402) 984-8488  
[bmwebsd@windstream.net](mailto:bmwebsd@windstream.net)

### JACK E. DAVID

*Member At-Large*  
9300 Runyan Road  
Catlettsburg, KY 41129  
(606) 931-0115  
Fax: 606-931-0008  
[jedavid6030@gmail.com](mailto:jedavid6030@gmail.com)

### South Region

### DENNIS R. ALBERS

*Chairman*  
111 Imperial Blvd., Suite C-300  
Hendersonville, TN 37075  
(615) 338-0027  
Fax: 615-338-0209  
[dralbersbmwe@aol.com](mailto:dralbersbmwe@aol.com)

### Northwest Region

### ROY L. MILLER

*Member*  
12124 Hegg Avenue  
Custer, SD 57730  
(307) 575-1487  
Fax: 605-673-2266  
[rmiller@bmwe.org](mailto:rmiller@bmwe.org)

### West Region

### GARY W. MARQUART

*Vice Chairman*  
521 S.E. 10th Street  
Newton, KS 67114-4407  
Cell: (316) 836-1748  
[gmarquart@sbcglobal.net](mailto:gmarquart@sbcglobal.net)

### Northeast Region

### JED DODD

*Member*  
421 N. 7th Street, Suite 299  
Philadelphia, PA 19123-3925  
(215) 574-3515  
[doddjed@verizon.net](mailto:doddjed@verizon.net)

### NATIONAL DIVISION APPOINTEES

### President's Department

### Novi, MI Office

41475 Gardenbrook Road  
Novi, MI 48375-1328  
(248) 662-2660 or (248) 662-2 (Ext. #)  
Fax: 248-662-2659

### CLARK BALLEW

*Director of Communications*  
Ext. 605, [cballew@bmwe.org](mailto:cballew@bmwe.org)

### WILLIAM A. BON

*General Counsel*  
Ext. 615, [billb@bmwe.org](mailto:billb@bmwe.org)

### DANIEL R. INCLIMA

*Assistant to President,  
Communications Department*  
Ext. 613  
[dinclima@bmwe.org](mailto:dinclima@bmwe.org)

### PETER E. KENNEDY

*Executive Assistant to President*  
Ext. 614, [peterk@bmwe.org](mailto:peterk@bmwe.org)

### TIMOTHY McCALL

*Director of Organizing*  
3121 Plantation Key Drive  
Baton Rouge, LA 70816  
(225) 752-3346 Fax: 225-752-3347  
Cell: (225) 978-6503  
[Timmc1656@aol.com](mailto:Timmc1656@aol.com)

### ROY L. MILLER

*Assistant to President, Assistant Organizer–  
Northwest Region*  
12124 Hegg Ave.  
Custer, SD 57730  
(248) 986-6078  
Fax: 605-673-2266  
[rmiller@bmwe.org](mailto:rmiller@bmwe.org)

### ROY L. MORRISON

*Assistant to President, Assistant Organizer–  
West Region*  
4907 N. Normandie  
Spokane, WA 99205  
(248) 986-7175  
[rmorrison@bmwe.org](mailto:rmorrison@bmwe.org)

### ANTHONY C. SESSA

*Assistant to President,  
Assistant Organizer – Northeast Region*  
P.O. Box 165  
Manalapan, NJ 07726  
Cell: (248) 949-7387  
[asessa@bmwe.org](mailto:asessa@bmwe.org)

### VICTORIA THURLOW

*Administrative Secretary*  
Ext. 610, [vthurlow@bmwe.org](mailto:vthurlow@bmwe.org)

### MATTHEW A. WEAVER

*Assistant to President, Assistant Organizer–  
South Region*  
911 N. Main St.  
Genoa, OH 43430  
Cell: (248) 986-6079  
Fax: 419-855-9328  
[mweaver@bmwe.org](mailto:mweaver@bmwe.org)

### CAREY DALL

*Internal Organizing Coordinator*  
532 30th St. #10  
Oakland, CA 94609  
Cell: (248) 986-6095  
Fax: 419-855-9328  
[cdall@bmwe.org](mailto:cdall@bmwe.org)

### Arbitration Department

### Chicago, IL Office

150 S. Wacker Drive, Suite 300  
Chicago, IL 60606-4101  
(312) 630-9328  
Fax: 312-630-9438

### MARK J. SCHAPPAUGH

*Assistant to President*  
[marks@bmwe.org](mailto:marks@bmwe.org)

### SANDRA C. MATTOX

*Senior Office Coordinator*  
[sandyc@bmwe.org](mailto:sandyc@bmwe.org)

### KEVIN D. EVANSKI

*Director, Chicago Office*  
[kevine@bmwe.org](mailto:kevine@bmwe.org)

### RYAN D. HIDALGO

*Public Law Board Advocate*  
[ryanh@bmwe.org](mailto:ryanh@bmwe.org)

### ANDREW MULFORD

*Public Law Board Advocate*  
[andrewm@bmwe.org](mailto:andrewm@bmwe.org)

### DAVID M. PASCARELLA

*Public Law Board Advocate*  
[davep@bmwe.org](mailto:davep@bmwe.org)

### ROBERT J. SHANAHAN, JR.

*Staff Assistant*  
[rshanahan@bmwe.org](mailto:rshanahan@bmwe.org)

### ZACHARY C. VOEGEL

*NRAB Third Division Member*  
[zvoegel@bmwe.org](mailto:zvoegel@bmwe.org)

### ROSS A. GLORIOSO

*Staff Assistant*  
[rglorioso@bmwe.org](mailto:rglorioso@bmwe.org)

### CASEY J. SUMMERS

*Staff Assistant*  
[csummers@bmwe.org](mailto:csummers@bmwe.org)

### National Legislation Department

### Washington, DC Office

25 Louisiana Ave., N.W., 7th Floor  
Washington, DC 20001-2130  
(202) 624-6800 or (202) 508-(Ext#)  
Fax: 202-508-6450

### KATIE L. FRUZYNSKI

*Project Coordinator/Assistant to  
President, Education Department*  
(202) 508-6446  
[katie@bmwe.org](mailto:katie@bmwe.org)

### MIKE GEKAS

*Assistant to President, Safety*  
(202) 508-6439  
Cell: (202) 731-8229  
[mgekas@bmwe.org](mailto:mgekas@bmwe.org)

### JASON LEE RICHERT

*Assistant to President, Legislative Department*  
[jlr@bmwe.org](mailto:jlr@bmwe.org)

### DONALD F. GRIFFIN

*Director of Strategic Coordination and  
Research*  
1420 King Street, Suite 500  
Alexandria, VA 22314  
(703) 548-1262 Fax: 703-563-9457  
[dgriffin@bmwe.org](mailto:dgriffin@bmwe.org)

### CHARLES R. HOGUE

*Director of Government Affairs*  
(202) 508-6447  
[crhogue@bmwe.org](mailto:crhogue@bmwe.org)

### RICHARD A. INCLIMA

*Director of Safety*  
(202) 508-6449  
[ricki@bmwe.org](mailto:ricki@bmwe.org)

### SONIA PETTAWAY

*Office Coordinator and  
Legislative Assistant*  
(202) 508-6448  
[sonia@bmwe.org](mailto:sonia@bmwe.org)

### Secretary-Treasurer's Department

### Novi, MI Office

41475 Gardenbrook Road  
Novi, MI 48375-1328  
(248) 662-2660 or (248) 662-2-(Ext.#)  
Fax: 248-662-2659

### JOE CORLEY

*Field Auditor*  
Ext. 611, [jcorley@bmwe.org](mailto:jcorley@bmwe.org)

### RICK FORBES

*Director, Information Systems*  
Ext. 607, [rick@bmwe.org](mailto:rick@bmwe.org)

### ANGELA KRAJEWSKI

*Controller*  
Ext. 608, [akrajews@bmwe.org](mailto:akrajews@bmwe.org)

### CHRIS LEIDY

*Assistant Director, Information Systems*  
Ext. 634, [chris@bmwe.org](mailto:chris@bmwe.org)

### WILLIAM J. MARTINKO

*Field Auditor*  
P.O. Box 190  
Brunswick, OH 44212-0190  
(330) 460-5630 Fax: 330-460-5660  
[wjm@bmwe.org](mailto:wjm@bmwe.org)

### MARY MOCHER

*Staff Assistant, Financial Services*  
Ext. 621, [mary@bmwe.org](mailto:mary@bmwe.org)

### STEVE MOCHER

*Government Reporting Services*  
Ext. 604, [sm@bmwe.org](mailto:sm@bmwe.org)

### MICHELLE OSBORNE

*Executive Assistant to Secretary-Treasurer*  
Ext. 609, [michelleo@bmwe.org](mailto:michelleo@bmwe.org)

### CAROL SCHAEIDIG

*Staff Assistant, Membership Services*  
Ext. 633, [carol@bmwe.org](mailto:carol@bmwe.org)

### DANIEL YACK

*Staff Assistant, Information Systems*  
Ext. 622, [dyack@bmwe.org](mailto:dyack@bmwe.org)

### STEVE VLAHOS

*Staff Assistant, Information Systems*  
Ext. 632, [svlahos@bmwe.org](mailto:svlahos@bmwe.org)

### SYSTEM OFFICERS

### AFFILIATED SYSTEM FEDERATION

(606) 931-0115

Fax: 606-931-0008

Alton & Southern Railway Company  
CSX Transportation, Incorporated  
—Seaboard System Railroad, Incorporated  
—Clinchfield Railroad Company  
MacArthur Bridge  
Manufacturers Railway Company  
Norfolk and Portsmouth Belt Line Railroad  
Company





Norfolk Southern Corporation  
*Former*—Des Moines Union Railway Company  
Interstate Railroad Company  
Norfolk & Western Railway Company  
Southern Railway Company  
Wabash Railroad Company  
Northeast Illinois Railroad Corporation (Metra)  
Terminal Railroad Association of St. Louis

**JACK E. DAVID**

*General Chairman*  
9300 Runyan Road  
Cattlettsburg, KY 41129  
(660) 931-0115  
Fax: 606-931-0008  
[jedavid6030@gmail.com](mailto:jedavid6030@gmail.com)

**JONATHAN LONG**

*First Vice Chairman*  
1365 Booker Road  
Castlewood, VA 24224-7415  
(276) 794-7400  
[johnnylong40johnny@aol.com](mailto:johnnylong40johnny@aol.com)

**JUSTIN BLANKENSHIP**

*Second Vice Chairman*  
9300 Runyan Road  
Cattlettsburg, KY 41129  
(606) 931-0115  
[justinblankenship2@aol.com](mailto:justinblankenship2@aol.com)

**ALFRED L. WARDELL**

*Secretary-Treasurer*  
RR. 1 Box 63BBB  
Pamplin, VA 23958

**ALLIED FEDERATION**

**(800) 752-8009**  
**(615) 338-0027**  
**Fax: 615-338-0209**  
[www.alliedfed.org](http://www.alliedfed.org)

Amtrak  
Appalachian & Ohio Railroad  
Chicago & Eastern Illinois Railroad  
Chesapeake & Ohio Railway  
CSX Transportation Incorporated  
*Former*—Baltimore & Ohio Railroad  
Baltimore & Ohio Chicago Terminal  
Durham & Southern Railway Company  
Norfolk Southern Corporation  
Seaboard System Railroad,  
Incorporated  
Louisville & Nashville Railroad  
Seaboard Coast Line Railroad  
Atlantic Coast Line Railroad  
Columbia, Newberry and Laurens  
Railroad  
Atlanta and West Point—The Western  
Railway of Alabama—  
Georgia Railroad (including Augusta  
and Summerville Railroad)  
Atlanta Joint Terminals  
El Dorado and Wesson Railway  
Evansville & Western Railway Company  
Florida East Coast  
High Point, Thomasville & Denton Railroad  
Huron & Eastern Railway  
Kansas City Southern Railway Company  
*Former*—Louisiana & Arkansas Railway  
Company  
Milwaukee-Kansas City Southern  
Joint Agency  
Louisiana and North West Railroad Company  
Mid-Louisiana Rail Corporation  
Monon Railroad  
New Orleans Public Belt Railroad  
Norfolk Southern Corporation  
Oklahoma-Kansas-Texas Railroad Company  
Port Terminal Railroad Association  
Richmond, Fredericksburg and Potomac  
Railway (including Potomac Yard)  
St. Louis Southwestern Railway Company  
Southern Pacific Transportation Company  
*Eastern Lines*—Texas & Louisiana Lines  
Texas City Terminal Railway Company  
Texas-Mexican Railway Company  
Union Belt of Detroit  
Union Pacific Railroad Company  
*Former*—Abilene & Southern Railway  
Company  
Fort Worth Belt Railway Company  
Galveston, Houston and Henderson  
Railroad Company  
Galveston Wharves  
Houston Belt & Terminal Railway  
Company  
Kansas, Oklahoma & Gulf Railway  
Company  
Missouri-Illinois Railroad Company  
Missouri-Kansas-Texas

Railroad Company  
Missouri Pacific Railroad Company  
New Orleans & Lower Coast Railroad  
Company  
Union Terminal Railway Company  
(St. Joseph, Missouri)  
Weatherford, Mineral Wells &  
Northwestern Railway Company  
Winston-Salem Southbound Railway

**DENNIS R. ALBERS**

*General Chairman*  
111 Imperial Blvd., Suite C-300  
Hendersonville, TN 37075  
[draibersbmwe@aol.com](mailto:draibersbmwe@aol.com)

**BILL R. PALMER**

*Vice Chairman/Secretary-Treasurer*  
P.O. Box 473  
Falls City, NE 68355-0473  
(402) 801-0273 Fax: 888-262-8871  
[mopgc@neb.rr.com](mailto:mopgc@neb.rr.com)

**KENT W. MALZNER**

*Vice Chairman*  
6506 Curtman Rd.  
Russellville, MO 65074  
(573) 782-3152 Fax: 573-782-3161  
[kmalznerbmwe@hotmail.com](mailto:kmalznerbmwe@hotmail.com)

**JAMES D. WILSON**

*Vice Chairman*  
2300 Division St. Ext  
Parkersburg, WV 26101  
(681) 229-0811 Fax: 681-229-0847  
[jdww.allied@gmail.com](mailto:jdww.allied@gmail.com)

**L. A. BUCKLEY**

*First Vice Chairman*  
141 Iroquois Trail  
Ona, WV 25545-9740  
(304) 736-2255 Fax: 866-890-6270  
[lab11058@aol.com](mailto:lab11058@aol.com)

**BRIAN R. THIES**

*First Vice Chairman*  
2170 Lakeview Drive  
Cutler, IL 62238-2202  
(618) 497-2302 Fax: 618-497-2369  
[bthiesbmwe@hotmail.com](mailto:bthiesbmwe@hotmail.com)

**PEDRO AMARO**

*Vice Chairman*  
203 E. Travis Street  
Laredo, TX 78040  
(956) 712-0080 Fax: 956-712-0082  
[jefes2003@att.net](mailto:jefes2003@att.net)

**M. RUSSELL FARMER**

*Vice Chairman*  
2418 Foster Sprouse Road, N.W.  
Thomson, GA 30824-6932  
Cell: (706) 361-5777 Fax: 706-555-7289  
[afsmrfbmwed@yahoo.com](mailto:afsmrfbmwed@yahoo.com)

**JEFFREY T. FINCH**

*Vice Chairman*  
4855 Magnolia Cove Dr., Apt. 148  
Kingwood, TX 77345  
(281) 713-2355 Fax: 281-713-2463  
[jeffretytfinch@yahoo.com](mailto:jeffretytfinch@yahoo.com)

**LARRY L. FOSTER**

*Vice Chairman*  
1845 11000 Road  
Oswego, KS 67356-8764  
Cell: (620) 515-2664  
[llfoster@wavewls.com](mailto:llfoster@wavewls.com)

**ROY GRIFFITH**

*Vice Chairman*  
7305 Hancock Village Dr., Ste. 533  
Chesterfield, VA 23832  
(800) 752-8009 Ext. 506  
Fax: 866-231-5616  
[roysrep99@yahoo.com](mailto:roysrep99@yahoo.com)

**JAMES D. KNIGHT**

*Vice Chairman*  
2153 Broadwater Drive  
Jacksonville, FL 32225  
(904) 642-8076 Fax: 904-642-7838  
[kjimjoy@aol.com](mailto:kjimjoy@aol.com)

**DAVID R. LOPEZ**

*Vice Chairman*  
137 N. Ohio Avenue  
Clarksburg, WV 26301-2230  
(304) 626-3633 Fax: 304-626-3063  
[handyman1271@aol.com](mailto:handyman1271@aol.com)

**SCOTTY D. NISWONGER**

*Vice Chairman*  
P.O. Box 1075  
Beebe, AR 72012  
(501) 843-8237 Fax: 501-246-8538  
[niswonger.scott@yahoo.com](mailto:niswonger.scott@yahoo.com)

**PATRICK H. QUIGLEY**

*Vice Chairman*  
2246 Jo Ann Place  
Covington, KY 41011  
(859) 743-6601 Fax: 859-765-0881  
[quigley885@gmail.com](mailto:quigley885@gmail.com)

**RICKY J. RICHARD**

*Vice Chairman*  
5307 Lyre Street  
Orange, TX 77630  
(409) 749-0663 Fax: 409-697-8040  
[rjrichard1252@sbcglobal.net](mailto:rjrichard1252@sbcglobal.net)

**ANDREW SHELTON**

*Vice Chairman*  
613 Myatt Street  
Smyrna, TN 37167-4163  
(615) 220-3468 Fax: 615-220-0066  
[aefahs@bellsouth.net](mailto:aefahs@bellsouth.net)

**BRIAN P. THOMPSON**

*Vice Chairman*  
3507 Evans Ave.  
Valparaiso, IN 46383  
(219) 765-9334 Fax: 219-465-1583  
[btalliedfed@gmail.com](mailto:btalliedfed@gmail.com)

**NATHANIEL TRAWICK**

*Vice Chairman*  
7720 Breezewood Circle  
Pensacola, FL 32534-4015  
(850) 474-6399 Fax: 850-474-6959  
[natetbmwed@aol.com](mailto:natetbmwed@aol.com)

**ATCHISON, TOPEKA &  
SANTA FE FRISCO SYSTEM  
FEDERATION**

**(316) 283-1470**  
**Fax: 316-283-7264**

Atchison, Topeka & Santa Fe Railway Company  
*Former*—Illinois Northern Railway  
St. Joseph Terminal Railroad  
Company  
Burlington Northern Santa Fe Railway Company  
*Former*—Quanah, Acme & Pacific Railway  
Company  
St. Louis-San Francisco Railway  
Company  
Colorado & Wyoming Railway Company  
Gulf, Colorado and Santa Fe Railway Company  
Houston Belt Terminal Railway  
Hutchison and Northern Railway Company  
Los Angeles Junction Railway  
Louisiana Railway and Navigation Company  
of Texas  
Northeast Oklahoma Railroad Company  
Panhandle and Santa Fe Railway Company  
Sand Springs Railway Company  
South Kansas & Oklahoma Railroad  
Wichita Terminal Association,  
Wichita Union Terminal Railway Company

**GARY W. MARQUART**

*General Chairman*  
521 S.E. 10th Street  
Newton, KS 67114-4407  
Cell: (316) 836-1748  
[gmarquart@atsff.org](mailto:gmarquart@atsff.org)

**THOMAS W. BLACKWELL**

*Assistant General Chairman*  
9760 Faggard Road  
Beaumont, TX 77707-2611  
Cell: (409) 273-8229  
[tblackwell22@sbcglobal.net](mailto:tblackwell22@sbcglobal.net)

**JEFFERY L. FRY**

*Vice General Chairman / Secretary-Treasurer*  
1205 Greene Road 214  
Beech Grove, AR 72413  
Cell: (918) 510-8169  
[jfry2@sbcglobal.net](mailto:jfry2@sbcglobal.net)

**M. SHANE LINDSEY**

*Assistant General Chairman*  
60176 Smithville Rd.  
Amory, MS 38821  
Cell: (662) 315-5120  
[slindsey\\_40@att.net](mailto:slindsey_40@att.net)

**RANDY S. LUNOW**

*Assistant General Chairman*  
521 S.E. 10th Street  
Newton, KS 67114-4407  
Cell: (316) 836-1834  
[rlunow@atsff.org](mailto:rlunow@atsff.org)

**VERNON D. VANAUSDALL**

*Assistant General Chairman*  
949 Witch Hollow St.  
Gardner, KS 660330  
Cell: (913) 207-4276  
[v.vanausdall@atsff.org](mailto:v.vanausdall@atsff.org)

**BESSEMER & LAKE ERIE  
SYSTEM DIVISION**

Bessemer and Lake Erie Railroad Company

**MATTHEW R. NIES**

*General Chairman*  
279 Holyoke Rd  
Butler, PA 16001  
(724) 601-3856  
[nies92@yahoo.com](mailto:nies92@yahoo.com)

**JUSTIN C. UNIK**

*Assistant General Chairman*  
123 Teakwood Road  
Butler, PA 16001  
(412) 600-3020  
[jcunike@zoominternet.net](mailto:jcunike@zoominternet.net)

**DOUG ENGSTROM**

*Secretary-Treasurer*  
126 Sharp Rd.  
Sandy Lake, PA 16145  
Cell: (724) 301-6023  
[douglasde380@gmail.com](mailto:douglasde380@gmail.com)

**BURLINGTON NORTHERN  
SYSTEM FEDERATION**

**(612) 332-7947**  
**Fax: (612) 332-6166**  
[bmwebnso@bitstream.net](mailto:bmwebnso@bitstream.net)

Burlington Northern Railroad Company  
*Former*—Oregon Electric Railway  
Oregon Trunk Railway  
Camas Prairie Railroad  
Lake Superior Terminal & Transfer Railway  
Company  
Longview, Portland and Northern Railway  
Company  
Montana Rail Link, Inc.  
Oregon, California & Eastern Railway Company  
Saint Paul Union Depot  
Spokane International Railroad Company  
Willamina & Grand Ronde Railroad Company

**DAVID L. CARROLL**

*General Chairman*  
510 1st Avenue North #601  
Minneapolis, MN 55403  
(612) 332-7947 Fax: 612-332-6166  
Cell: (509) 599-8633  
[dllcarroll60@comcast.net](mailto:dllcarroll60@comcast.net)

**JOHN A. MOZINSKI, JR.**

*Vice Chairman/Secretary-Treasurer*  
510 1st Avenue North #601  
Minneapolis, MN 55403  
(612) 332-7947 Fax: 701-297-2481  
Cell: (701) 630-2047  
[john.mozinski@gmail.com](mailto:john.mozinski@gmail.com)

**SHAWN ELLESTAD**

*Vice General Chairman*  
505 4th Avenue  
Laurel, MT 59044-2303  
(406) 633-4109  
Cell: (406) 690-3541  
[eshawn6667@yahoo.com](mailto:eshawn6667@yahoo.com)

**ROD F. ENGLESON**

*Vice General Chairman*  
422 4th Avenue NW  
Minot, ND 58703-3148  
Cell: (701) 818-7507  
[rod.engleson@gmail.com](mailto:rod.engleson@gmail.com)

**TIMOTHY R. GILLUM**

*Vice General Chairman*  
P.O. Box 495  
Castle Rock, WA 98611-0495  
(360) 967-2395 Fax: 877-264-2810  
Cell: (360) 430-2718  
[tgillum3@gmail.com](mailto:tgillum3@gmail.com)

**DONN C. SANFORD**

*Vice General Chairman*  
303 W. Akers Ln.  
Colbert, WA 99005  
(509) 951-4089 Fax: 509-293-7058  
[dcsanford10@gmail.com](mailto:dcsanford10@gmail.com)

**BURLINGTON SYSTEM  
DIVISION**

**Hastings, Nebraska Office**

**(402) 463-0234**  
**Fax: 402-463-0226**  
[bmwebsd@windstream.net](mailto:bmwebsd@windstream.net)

**Zimmerman, Minnesota  
Office**

**(763) 856-0028**  
**Fax: 763-856-0055**

[BMWEDUS@aol.com](mailto:BMWEDUS@aol.com)

Burlington Northern Railroad Company  
—Colorado and Southern Railway Company  
Fort Worth and Denver Railway Company  
Joint Texas Division of Chicago,  
Rock Island and Pacific Railroad  
Company  
Colorado & Wyoming Railway Company  
Denver and Rio Grande Western Railroad  
Company  
Denver Union Terminal Railway Company  
Iowa Interstate Railroad L.T.D.  
Kansas City Terminal Railway Company  
Keokuk Union Depot  
Lake Superior & Ishpeming Railroad  
Company  
Northeast Illinois Railroad Corporation  
Northern Indiana Commuter Transportation  
District  
Soo Line Railroad Company  
*Former*—Chicago, Milwaukee, St. Paul and  
Pacific Railroad Company  
Minneapolis, Northfield and  
Southern Railway, Incorporated  
Toledo, Peoria & Western Railway Corp.

**STACI MOODY-GILBERT**

*General Chairwoman*  
747 N. Burlington Avenue, Suite 312  
Hastings, NE 68901  
Cell: (402) 984-8488  
[bmwebsd@windstream.net](mailto:bmwebsd@windstream.net)

**TERRY A. BARRETTE**

*Vice General Chairman/Secretary-Treasurer*  
P.O. Box 468  
River Falls, WI 54022-0468  
(651) 324-5210  
[bsdnorth@att.net](mailto:bsdnorth@att.net)

**RANDY S. ANDERSON**

*Vice General Chairman*  
2620 S. 102nd Street  
Omaha, NE 68124-1808  
(402) 575-1727  
[rsanderson@cox.net](mailto:rsanderson@cox.net)

**GEORGE LOVELAND**

*Vice General Chairman*  
P.O. Box 32  
Ellisville, IL 61431-0032  
(309) 337-4262  
[gloveland7@yahoo.com](mailto:gloveland7@yahoo.com)

**JIM VARNER**

*Vice General Chairman*  
P.O. Box 87  
Newcastle, WY 82701  
(307) 532-1941  
[jimbo55@outlook.com](mailto:jimbo55@outlook.com)

**CHICAGO & EASTERN  
ILLINOIS SYSTEM  
DIVISION**

**(219) 696-2848**  
**Fax: 219-696-3716**

Chicago Heights Terminal Transfer Railroad  
Union Pacific System







—Missouri Pacific Railroad Company  
(Chicago & Eastern Illinois Railroad)

**PATRICK A. CHARTERS**

*General Chairman*  
801 W. Bristow St.  
Monticello, IL 61856  
(217) 762-4112 Cell: (217) 493-6437  
[pbjla801@frontier.com](mailto:pbjla801@frontier.com)

**EVAN C. PEDIGO**

*Vice Chairman / Secretary-Treasurer*  
20 Chad Ave.  
Sullivan, IL 61951  
Cell: (217) 201-2060  
[clarkepedigo@gmail.com](mailto:clarkepedigo@gmail.com)

**COMMUTER RAILROAD  
SYSTEM DIVISION**

**(215) 245-2236**

**1-(800) 344-2718 Toll Free  
in CT, DE, NY, NJ, PA  
Fax: 215-245-2237  
[crsd2773@aol.com](mailto:crsd2773@aol.com)  
[www.crsdbmwe.org](http://www.crsdbmwe.org)**

New Jersey Transit Rail Operations,  
Incorporated  
Southeastern Pennsylvania Transportation  
Authority

**MICK BARRETT**

*General Chairman*  
Five Neshaminy Interplex, Suite 205  
Trevose, PA 19053  
(215) 245-2236  
Fax: 215-245-2237  
[crsd2773@aol.com](mailto:crsd2773@aol.com)

**STEVE HOFFMAN**

*Vice Chairman/Secretary-Treasurer*  
409 Lake Barnegat Dr. North  
Forked River, NJ 08731  
(908) 399-2187  
[hofthecrow@yahoo.com](mailto:hofthecrow@yahoo.com)

**RAYMOND WALLACE**

*Vice Chairman*  
P.O. Box 318  
Cheltenham, PA 19012-0318  
Cell (908) 399-2186  
[rrwbmwed2910@gmail.com](mailto:rrwbmwed2910@gmail.com)

**CONSOLIDATED RAIL  
SYSTEM FEDERATION**

**(419) 734-9811  
Fax: (419) 734-7267  
[crsf1@frontier.com](mailto:crsf1@frontier.com)**

Amtrak (Albany-Rensselaer, New York Area)  
Amtrak (Beech Grove, Indiana Shop)  
Amtrak (Kalamazoo, Michigan, to Michigan  
City, Indiana Facilities)  
Consolidated Rail Corporation Shared Assets  
(Detroit, New Jersey, Philadelphia)  
CSX Transportation, Inc.  
— Consolidated Rail Lines (NYC)  
Pittsburgh & Lake Erie Railroad  
Grand Trunk Rail System  
Springfield Terminal Railway Company  
(Pan Am Railways) Boston and  
Maine Corporation  
Indiana Harbor Belt Railroad Company  
Keolis Commuter Services  
Monongahela Connecting Railroad Company  
Norfolk Southern Corporation  
— Akron, Canton & Youngstown Railroad Co.  
Lorain & West Virginia Railway Co.  
New York, Chicago & St. Louis Railroad  
Co. including Nickel Plate, Lake Erie  
and Western and Clover Leaf Districts,  
and Wheeling & Lake Erie Districts  
Pittsburgh & West Virginia Railway Co.  
St. Lawrence and Atlantic Railroad  
Company

**EDWARD W. LONG**

*General Chairman*  
58 Grande Lake Drive, Suite 2  
Port Clinton, OH 43452  
Phone/Fax: (716) 672-6322  
Office Fax: 419-734-7267  
[elong@netsync.net](mailto:elong@netsync.net)

**ANTHONY BOSSI JR.**

*Assistant General Chairman*  
19 Shaw St.  
Carver, MA 02330  
(508) 962-9807  
[bossi8of9@yahoo.com](mailto:bossi8of9@yahoo.com)

**PAUL KILGALLON**

*First Vice Chairman*  
59 Carriage Road  
Clifton Park, NY 12065-7503  
(518) 371-4725 Fax: 518-371-4726  
[pkilga@aol.com](mailto:pkilga@aol.com)

**JEFFREY J. BAINTER**

*Second Vice Chairman*  
300 North Bliss Avenue  
Muncie, IN 47304  
(765) 759-8760 Fax: 765-759-8761  
[jbainter@bmwe.org](mailto:jbainter@bmwe.org)

**JASON E. GRAHAM**

*Secretary-Treasurer*  
1123 Washington Avenue  
Girard, OH 44420-1964  
Phone/Fax: (234) 421-5201  
[jakgraham@hotmail.com](mailto:jakgraham@hotmail.com)

**JESSE J. DEWE**

*Assistant General Chairman*  
8483 Stout Road  
Cuba, NY 14727-9714  
(585) 968-8898 Fax: 585-486-1492  
[jjdew08@aol.com](mailto:jjdew08@aol.com)

**DAVID G. BEAL**

*Assistant General Chairman*  
3602 North Lakeside Drive  
Muncie, IN 47304  
(765) 730-5043  
[bmwed89@gmail.com](mailto:bmwed89@gmail.com)

**PERRY K. GELLER, JR.**

*Assistant General Chairman*  
58 Grande Lake Dr. Suite 2  
Port Clinton, OH 43452  
Phone/Fax: (734) 828-6288  
[clevelandrocks2@hotmail.com](mailto:clevelandrocks2@hotmail.com)

**ELGIN, JOLIET & EASTERN  
SYSTEM DIVISION**

Elgin, Joliet and Eastern Railway Company

**ROLANDO DEL MURO**

*General Chairman*  
6912 Foxwood Drive  
Schererville, IN 46375-4462  
(219) 314-9658  
[rdelmuro87@yahoo.com](mailto:rdelmuro87@yahoo.com)

**JOHN WERR**

*Secretary-Treasurer*  
8151 168th Place, Apt. 3W  
Tinley Park, IL 60477-2024  
Cell: (708) 743-4516  
[j.werr@yahoo.com](mailto:j.werr@yahoo.com)

**DAVID W. CHRISTIAN**

*Vice Chairman*  
26 N. Hobart Road  
Hobart, IN 46342-3356

**RICHARD STACIWA**

*Assistant Chairman*  
434 S Main St.  
Crown Point, IN 46307  
Cell: (219) 808-7490  
[richardstaciwa@att.net](mailto:richardstaciwa@att.net)

**ILLINOIS CENTRAL GULF  
FEDERATION**

**(270) 247-0600  
Fax: 270-247-0453  
[bmweicgf@att.net](mailto:bmweicgf@att.net)**

Amtrak (New Orleans Union Passenger  
Terminal)  
Cedar Rapids & Iowa City Railway Company  
Cedar River Railroad  
Chicago, Central & Pacific Railroad Company  
Columbus & Greenville Railway Company  
Gateway Western Railway,  
Illinois Central Railroad  
Meridian & Bigbee Railroad Company  
MidSouth Rail Corporation

Mississippi Export Railroad  
Northeast Illinois Railroad Corporation  
Paducah-Louisville Railway  
Southern Pacific, Chicago, St. Louis  
Corporation  
—Chicago, Missouri & Western Railway  
Company  
SouthRail Corporation  
Terminal Railway, Alabama State Docks

**HAYWARD J. GRANIER**

*General Chairman*  
333 East Broadway  
Mayfield, KY 42066  
P: (270) 247-0600  
[granier1@hotmail.com](mailto:granier1@hotmail.com)

**DARRELL L. McGUIRE**

*First Vice Chairman/Secretary-Treasurer*  
333 East Broadway  
Mayfield, KY 42066  
P: (270) 247-0600  
[derailm66@gmail.com](mailto:derailm66@gmail.com)

**NORTHEASTERN SYSTEM  
FEDERATION**

Amtrak (Northeast Corridor)  
Amtrak (South Station, Boston, Massachusetts)  
CSX Transportation, Incorporation  
—Consolidated Rail Corporation  
—New York Connecting Railroad  
Penn Central—New York, New haven and  
Hartford Railroad Company  
Delaware & Hudson Railway Company  
Guilford Transportation Industries  
(Springfield Terminal Railway Company),  
Main Central Railroad Company,  
Portland Terminal Company  
New York, Susquehanna and Western Railroad  
Corporation

**DALE E. BOGART, JR.**

*General Chairman*  
3321 Vestal Parkway East #B  
Vestal, NY 13850-2145  
(607) 217-5333 Fax: 607-217-5811  
[cptrackman@yahoo.com](mailto:cptrackman@yahoo.com)

**RENATO G. RUFO**

*Vice General Chairman/Secretary-Treasurer*  
161 Isabella Avenue  
Providence, RI 02908  
(401) 421-4292 Cell: (401) 829-2909  
Fax: 401-454-0760  
[renatorufo@verizon.net](mailto:renatorufo@verizon.net)

**MICHAEL B. CARTER**

*Assistant General Chairman*  
32 N. Cobble Hill Road  
Warwick, RI 02886-9307  
(401) 886-4747  
Cell: (401) 465-1409  
[micart1954@yahoo.com](mailto:micart1954@yahoo.com)

**DAVID A. CONNER**

*Assistant General Chairman*  
20 Nickerson Lane  
Rome, ME 04963-3238  
P: (207) 397-2844  
C: (207) 485-1479  
[connerdavid@yahoocom](mailto:connerdavid@yahoocom)

**KENNETH E. HERRINGTON**

*Assistant General Chairman*  
36 Walnut Street  
Mechanicville, NY 12118-1040  
(518) 664-3557 Cell: (518) 859-6816  
[kherring@nycap.rr.com](mailto:kherring@nycap.rr.com)

**JOHN E. MILLER**

*Vice General Chairman*  
1131 County Road 35  
Guilford, NY 13780-3122  
Cell: (607) 316-7050  
[trucker51559@gmail.com](mailto:trucker51559@gmail.com)

**RICHARD S. PRINCIPATO**

*Vice General Chairman*  
9 Prince Terrace  
Oakland, ME 04963-4550  
(207) 680-6002

**PENNSYLVANIA  
FEDERATION**

**(215) 574-3515  
Fax: 215-574-1910  
[www.pennfedbmwe.org](http://www.pennfedbmwe.org)**

Akron and Barberton Belt Railroad Company  
Amtrak  
—Penn Central  
Chicago Union Station Company  
Washington Terminal Company  
Canton Railroad Company  
CSX Transportation , Inc.  
—Consolidated Rail Corporation  
Baltimore & Eastern Railroad Company  
Buffalo Creek Railroad  
Ironton Railroad Company, the  
Lehigh Valley Railroad Company  
Penn Central-Pennsylvania Railroad  
Company,  
Pennsylvania-Reading Seashore Lines  
Monongahela Railway Company  
Maryland and Pennsylvania Railroad  
Company  
Middle Fork Railroad Company  
Norfolk Southern Railway Company  
—Consolidated Rail Corporation  
(See CSX Transportation, Inc.)  
Western Maryland Railway Company

**JED DODD**

*General Chairperson*  
421 N. 7th Street, Suite 299  
Philadelphia, PA 19123-3925  
[doddjed@verizon.net](mailto:doddjed@verizon.net)

**TYRONE NELSON**

*Vice Chairperson, Eastern Region District*  
4319 Brown St.  
Philadelphia, PA 19104  
(215) 387-0610 Fax: 215-387-0804  
[terry1271@gmail.com](mailto:terry1271@gmail.com)

**HEATH VEZZA**

*Vice Chairperson, Central Region District*  
1275 Solar Dr.  
Ambridge, PA 15003  
Phone/Fax: (724) 318-8040  
[heathvezza777@gmail.com](mailto:heathvezza777@gmail.com)

**THOMAS WOHANKA**

*Vice Chairperson, 1st District*  
238 Garfield Avenue  
Laurence Harbor, NJ 08879  
(732) 673-9076 Fax: 732-566-6313  
[wohanka@verizon.net](mailto:wohanka@verizon.net)

**WILLIAM K. MANNING**

*Vice Chairperson, 2nd District*  
P.O. Box 285  
Prospect Park, PA 19076-0285  
(610) 461-8641 Fax: 610-461-0422  
[wkmanning@aol.com](mailto:wkmanning@aol.com)

**STEVE STEARN**

*Vice Chairperson, 3rd District*  
P.O. Box 223  
Perryville, MD 21903  
(410) 658-6281 Fax: 410-658-6285  
[sstearn@zoominternet.net](mailto:sstearn@zoominternet.net)

**GEORGE C. DAVIDSON**

*Secretary-Treasurer and Vice Chairperson,  
4th District*  
P.O. Box 2408  
Aston, PA 19014-2408  
(610) 485-4365 Fax: 610-485-4369  
[gcdavidson@comcast.net](mailto:gcdavidson@comcast.net)

**ANTHONY ROCHON**

*Vice Chairperson, Eastern Region District*  
P.O. Box 5267  
Upper Marlboro, MD 20775-1267  
(301) 336-9442 Fax: 301-336-3895  
[bleessro@aol.com](mailto:bleessro@aol.com)

**MICHAEL RAGARD**

*Vice Chairperson, 5th District*  
1339 N. 14th Street, Apt. M21  
Whitehall, PA 18052  
(607) 341-8087  
Fax: 610-841-8986  
[m.ragard.pennfed@gmail.com](mailto:m.ragard.pennfed@gmail.com)

**PAUL DOMINIC**

*Vice Chairperson, Central Region District*  
503 Route 259  
Ligonier, PA 15658  
(724) 238-7505 Fax: 724-238-7506  
[coachp1td@yahoo.com](mailto:coachp1td@yahoo.com)

**C. PERRY RAPIER**

*Vice Chairperson, Western Region District*  
309 Tillman Avenue  
Greenville, OH 45331  
(937) 459-5335 Fax: 937-459-5336  
[prapier@woh.rr.com](mailto:prapier@woh.rr.com)

**HEATH VEZZA**

*Vice Chairperson, Central Region District*  
1275 Solar Dr.  
Ambridge, PA 15003  
P: (724) 318-8040  
C: (412) 628-4664  
F: 724-318-8691  
[heathvezza777@gmail.com](mailto:heathvezza777@gmail.com)

**SOUTHERN SYSTEM  
DIVISION**

**(800) 537-2194  
Fax: 865-671-1386**

Norfolk Southern Corporation  
Southern Railway Company  
—Alabama Great Southern Railroad Company  
Atlantic and East Carolina Railway Company  
Central of Georgia Railroad Company  
Chattanooga Traction Company  
Cincinnati, New Orleans and Texas Pacific  
Railway Company  
Georgia Northern Railway  
Georgia Southern and Florida Railway  
Company  
Kentucky & Indiana Terminal Railroad  
Company  
Live Oak, Perry and South Georgia Railway  
Company  
Louisiana Southern Railway Company  
New Orleans Terminal Company  
Norfolk, Franklin and Danville Railway  
Company  
Tennessee, Alabama & Georgia Railway  
Company  
Tennessee Railway Company  
Valdosta Southern Railroad

**SAMUEL J. ALEXANDER**

*General Chairman*  
P.O. Box 24068  
Knoxville, TN 37933-2068  
C: (865) 368-8448  
[sam.alexander@charter.net](mailto:sam.alexander@charter.net)

**RICKY N. CHAMBERS**

*Assistant Chairman/Secretary-Treasurer*  
P.O. Box 24068  
Knoxville, TN 37933-2068  
Cell: (662) 415-9391  
[rickychambers@att.net](mailto:rickychambers@att.net)

**MARCUS F. HOOD**

*Vice Chairman*  
3470 Georgia Hwy 15 North  
Warthen, GA 31094-4024  
Cell: (706) 832-1606  
[mm34ga@aol.com](mailto:mm34ga@aol.com)

**UNIFIED SYSTEM DIVISION**

**Lyman, Wyoming Office** – USD Headquarters

P.O. Box 850  
Lyman, WY 82937  
(307) 787-7058 Fax: 307-787-3100

**(800) 525-1833  
(307) 787-7058  
Fax: 307-787-3100**

Amtrak  
*Former*—Los Angeles Union Passenger  
Terminal  
Amtrak (Mechanical Facility, Los Angeles,  
California)  
Belt Railway Company of Chicago  
Central California Traction Company  
Chicago and North Western  
Transportation Company  
*Former*—Chicago Great Western Railway  
Company  
Chicago, St. Paul, Minneapolis & Omaha  
Railway Company  
Dakota, Minnesota & Eastern Railroad  
Fort Dodge, Des Moines & Southern  
Railway Company  
Minneapolis & St. Louis Railway Company  
Minneapolis Industrial Railway  
Chicago and Western Indiana Railroad  
Company





Escanaba and Lake Superior Railroad Company  
Harbor Belt Line Railroad  
McCloud River Railroad  
Northwestern Pacific Railroad Company  
Ogden Union Railway and Depot Company  
Peoria and Pekin Union Railway Company  
Petaluma and Santa Rosa Railroad Company  
Portland Terminal Railroad Company  
Pueblo Union Depot & Railroad Company  
San Diego & Arizona Eastern Transportation Company  
Sierra Railroad Company  
South Omaha Terminal Railway Company  
Southern Pacific Transportation Company,  
—Western Lines  
—Pacific Lines  
Stockton Terminal & Eastern Railroad  
Tucson, Cornelia and Gila Bend Railroad  
Union Pacific System  
*Former*—Mount Hood Railway Company  
Sacramento Northern Railway  
Tidewater Southern Railway Company  
Western Pacific Railroad Company  
Yakima Valley Transportation Company  
Utah Railway Company  
VAE Nortrak - Cheyenne, WY Plant  
Valley & Siletz Railroad Company

**LOUIS R. BELOW**  
*General Chairman*  
P.O. Box 850  
Lyman, WY 82937  
(530) 622-7535 Fax: 530-622-7569  
[lbelow@usdbmwed.org](mailto:lbelow@usdbmwed.org)

**GALEN E. OWEN**  
*First Vice Chairman/Secretary-Treasurer*  
P.O. Box 305  
Trenton, MO 64683-0305  
(660) 359-2551 Fax: 660-359-2174  
[gowen@usdbmwed.org](mailto:gowen@usdbmwed.org)

**ADAM E. ALLEN**  
*Vice Chairman*  
P.O. Box 390  
Oakridge, OR 97463  
(541) 782-1037  
Cell: (541) 971-3358  
Fax: 541-782-5587  
[aallen@usdbmwed.org](mailto:aallen@usdbmwed.org)

**RICARDO CANCHOLA**  
*Vice Chairman*  
P.O. Box 939  
Elverta, CA 95626-0939  
(916) 419-7754 Fax: 916-419-2066  
[rcanchola@usdbmwed.org](mailto:rcanchola@usdbmwed.org)

**TONY D. CARDWELL**  
*Vice Chairman*  
P.O. Box 4580  
Bend, OR 97707  
(541) 593-0334 Fax: 541-593-3120  
[tcardwell@usdbmwed.org](mailto:tcardwell@usdbmwed.org)

**MIKE K. HALLGREN**  
*Vice Chairman*  
39565 Barker Ct.  
Sandy, OR 97055  
(503) 482-0337  
Cell: (503) 739-0639  
Fax: 503-482-0338  
[mhallgren@usdbmwed.org](mailto:mhallgren@usdbmwed.org)

**RENNE I. PEREZ**  
*Vice Chairman*  
2301 Glenview Ct.  
Schaumburg, IL 60194  
(847) 764-8995  
Cell: (630) 624-7321  
Fax: 847-764-8996  
[rperez@usdbmwed.org](mailto:rperez@usdbmwed.org)

**JEFF RANKIN**  
*Vice Chairman*  
P.O. Box 733  
Marshalltown, IA 50158-0733  
(641) 753-9060 Fax: 641-753-9607  
[jrankin@usdbmwed.org](mailto:jrankin@usdbmwed.org)

**BRIAN J. RUMLER**  
*Vice Chairman*  
235 Nature Valley Place  
Owatonna, MN 55060-1385  
(507) 446-0901 Fax: 507-446-0903  
[brumler@usdbmwed.org](mailto:brumler@usdbmwed.org)

**ANDREW T. MURPHY**  
*Vice Chairman*  
P.O. Box 201  
Amherst, NE 68812-0212  
(308) 238-0040 Fax: 308-238-0083  
[amurphy@usdbmwed.org](mailto:amurphy@usdbmwed.org)

**WISCONSIN CENTRAL  
SYSTEM DIVISION**  
  
**(920) 494-BMWE (2693)**  
***Fax: 920-494-2694***  
***[joeletiziabmwed@yahoo.com](mailto:joeletiziabmwed@yahoo.com)***

Wisconsin Central

**JOE LETIZIA**  
*General Chairman*  
912 Redwood Drive  
Green Bay, WI 54304  
Cell: (715) 572-7127  
[joeletiziabmwed@yahoo.com](mailto:joeletiziabmwed@yahoo.com)

**JOHN G. DAKE, JR.**  
*Vice Chairman/Secretary-Treasurer*  
N1557 State Road 73  
Wautoma, WI 54982  
(920) 948-8931

**THOMAS DAFFINSON**  
*Second Vice Chairman*  
*P.O. Box 413*  
Osseo, WI 54758-0413  
(715) 597-2611  
[tdaffinson@hotmail.com](mailto:tdaffinson@hotmail.com)

**BRADLEY WARDAS**  
*Vice Chairman – North*  
1307 14th Avenue  
International Falls, MN 56649  
Cell: (218) 324-1298  
[bwardas@hotmail.com](mailto:bwardas@hotmail.com)



# STATE LEGISLATIVE DIRECTORS

**Alabama**  
Joey Sandlin  
120 Tom Boy Rd  
Sulligent, AL 35586  
Cell (205) 712-6093  
[Sandlins4@yahoo.com](mailto:Sandlins4@yahoo.com)

**Arizona**  
VACANT

**Arkansas**  
Arthur Tupper  
225 Tiger Ridge Circle  
Mammoth Spring, AR 72554  
Cell (870) 710-0667  
[rrtup1994@hotmail.com](mailto:rrtup1994@hotmail.com)

**California**  
Andy J. Rodriguez  
2748 N Knoll Avenue  
Fresno, CA 93722  
(559) 276-9463  
Cell (559-355-6377  
[andy4375@att.net](mailto:andy4375@att.net)

**Colorado**  
Eric D. Nelson  
88 Summit Road  
Severance, CO 80550-2648  
Cell (970) 237-9804  
[ericdeannelson@gmail.com](mailto:ericdeannelson@gmail.com)

**Connecticut**  
VACANT

**Delaware**  
VACANT

**Florida**  
William L. Glisson  
9212 Riverview Drive  
Riverview, FL 33578  
Cell (813) 426-5338  
[wlgllisson@aol.com](mailto:wlgllisson@aol.com)

**Georgia**  
Tommy L. Boyd  
1847 Huckaby Rd  
Waycross, GA 31503  
(912) 614-2761  
[tboyd\\_4@hotmail.com](mailto:tboyd_4@hotmail.com)

**Idaho**  
VACANT

**Illinois**  
Eric D Dismuke  
329 E McIlrath St  
Harrisburg, IL 62946-1132  
(618) 383-3539  
[Dismuke2006@yahoo.com](mailto:Dismuke2006@yahoo.com)

**Indiana**  
Jeffery J. Bainter  
300 N. Bliss Ave.  
Muncie, IN 47304  
Cell (202) 258-1507  
(765) 759-8760  
Fax (765) 759-8761  
[jbainter@bmwe.org](mailto:jbainter@bmwe.org)

**Iowa**  
Ronald T. Hoffman  
1607 9th Avenue, SW  
Cedar Rapids, IA 52404  
Cell (319) 270-3618  
(319) 364-2180  
[RonniThoffman@gmail.com](mailto:RonniThoffman@gmail.com)

**Kansas**  
Steven J. Titus  
1128 320th Street  
Hiawatha, KS 66434  
Cell (785) 221-0796  
(785) 742-7718  
[stevetitus@embargmail.com](mailto:stevetitus@embargmail.com)

**Kentucky**  
Patrick H. Quigley  
2246 Jo Ann Pl  
Covington, KY 41011-4018  
(859) 743-6601  
[quigley885@gmail.com](mailto:quigley885@gmail.com)

**Louisiana**  
Jack W. Myers  
6827 N University Ave  
Carencro, LA 70520-5244  
(337) 896-4197  
Cell (337) 781-1129  
[jackmyers@cox.net](mailto:jackmyers@cox.net)

**Maine**  
VACANT

**Maryland**  
VACANT

**Massachusetts**  
Jacob Mercado  
7 Callahan Lane  
Lynn, MA 01902-4509  
Cell (781) 589-9491  
[Massfines121@gmail.com](mailto:Massfines121@gmail.com)

**Michigan**  
Chris Hensley  
9460 Sharp Road  
Swartz Creek, MI 48473  
(810) 691-7030  
[NascarcdH@gmail.com](mailto:NascarcdH@gmail.com)

**Mississippi**  
Murphy Evans, Jr.  
2405 Whitetail Circle  
West Point, MS 39773  
Cell (662) 425-5659  
(662) 494-8592  
[mfuzzy666@aol.com](mailto:mfuzzy666@aol.com)

**Missouri**  
Richard A. Taylor  
9214 Highway J  
Jacksonville, MO 65260-3409  
Cell (660) 651-4625  
[bearcat80@live.com](mailto:bearcat80@live.com)

**Montana**  
Zane L. Sampson  
417 Rollins Street  
Missoula, MT 59801  
(406) 549-5982  
Cell (406) 370-2229  
[drthvadrsl@aol.com](mailto:drthvadrsl@aol.com)

**Nebraska**  
Joshua J. Hall  
3556 Graham Ave  
Grand Island, NE 68803  
Cell (308) 390-6700  
[joshhall1978@hotmail.com](mailto:joshhall1978@hotmail.com)

**Nevada**  
VACANT

**New Hampshire**  
VACANT

**New Jersey**  
Thomas M. Wohanka  
238 Garfield Ave  
Laurence Harbor, NJ 08879-2831  
(732) 888-7354  
Cell (732) 673-9076  
[wohanka@verizon.net](mailto:wohanka@verizon.net)

**New Mexico**  
VACANT

**New York**  
Jesse J. Dewe  
8483 Stout Road  
Cuba, NY 14727  
Cell (585) 610-0952  
(904) 404-6638  
[jjdew08@aol.com](mailto:jjdew08@aol.com)

**North Carolina**  
VACANT

**North Dakota**  
VACANT

**Ohio**  
Perry K. Geller, Jr.  
POB 953  
Port Clinton, OH 43452  
Cell (419) 309-0570  
[clevelandrocks2@hotmail.com](mailto:clevelandrocks2@hotmail.com)

**Oklahoma**  
VACANT

**Oregon**  
Rodney L. Garhart  
PO Box 228  
2320 Mitchell Ave  
Baker City, OR 97814  
**Cell (541) 571-1977**

**Pennsylvania**  
Thomas E. Tarantella  
2038 Delaware Avenue  
Renovo, PA 17764  
(570) 923-0209  
Cell (570) 660-6688  
[tarante@comcast.net](mailto:tarante@comcast.net)

**Rhode Island**  
VACANT

**South Carolina**  
Jeffery T. Kennedy  
819 Greenwing Teal  
Florence, SC 29505  
(843) 679-5607  
Cell (843) 992-2827  
[jtkennedy357@gmail.com](mailto:jtkennedy357@gmail.com)

**South Dakota**  
Timothy Even  
1310 3rd Ave, NE  
Aberdeen, SD 57401  
Cell (605) 216-5012  
(605) 262-8000  
[treven\\_57401@yahoo.com](mailto:treven_57401@yahoo.com)

**Tennessee**  
Jeffery Joines  
940 Harkreader Rd  
Mount Juliet, TN 37122-4015  
(615) 443-0298  
Cell (615) 337-9643  
jeffjoines@bellsouth.net

**Texas**  
David Taylor  
1307 Avenue K NW  
Childress, TX 79201  
(940) 937-3085  
Cell (940) 345-0029  
[ropefire@gmail.com](mailto:ropefire@gmail.com)

**Utah**  
VACANT





\*\*\*\*\*

NAME	CITY/STATE	LODGE/SYSTEM/RR		D.O.D.
TERRANCE O. ANDERSON	CARY PLT., ME	0633	NE/LIFE	05/14/15
FERNANDO ANGUIANO	LITTLETON, CO	0014	BURL/LIFE	10/11/15
JOHN W. BARNETT	COLUMBUS, OH	0566	ASF/LIFE	10/18/15
COSMO COSTELLO	ASHTABULA, OH	1650	CRSF/LIFE	11/24/15
JOHN R. FISCH	CALEDONIA, MN	1965	BURL/LIFE	11/14/15
RICHARD W. HARTLEP	ATTICA, IN	2703	ASF/LIFE	10/30/15
EDWIN J. MADSEN	SALT LAKE CITY, UT	0968	USD/LIFE	10/26/15
DONALD E. TUTOR	OREGON, IL	1832	BURL/LIFE	10/23/15

REPORT OF DEATH NOTICES RECEIVED DURING NOVEMBER AND DECEMBER, 2015

JONATHAN R. CASTINE	ATHOL, MA	0347	CRSF/ST	12/08/15
CHARLES DEANES	HAMPTON, VA	0594	ASF/NS	12/31/15
MELVIN L. HEWITT	DEMING, NM	1862	USD/UP	12/17/15
JAMES P. JACOBSON	KITTITAS, WA	0389	BURNOR/BNSF	12/02/15
JOSE L. MORALES	STONE PARK, IL	0042	BURL/SOO	12/19/15
MARTIN J. PORRINI	NATIONAL PARK, NJ	3063	PENN/CR	11/22/15
RANDAL L. STROSNIDER	WEIMAR, CA	0922	USD/UP	12/26/15
WILLIAM STURDIVANT	LILESVILLE, NC	0562	AF/CSXT	09/18/15
WILLIAM A. TILLER	SOUTH BOSTON, VA	0568	ASF/NS	12/18/15

Sign up for BMWED News Alerts and get the latest news sent directly to your email account. To sign up visit the BMWED webpage at [www.bmwe.org](http://www.bmwe.org), or send your name and email address to [dyack@bmwe.org](mailto:dyack@bmwe.org), along with a request to be added to the BMWED News Alert list.



The BMWED-IBT National Division is seeking applicants for the position of Information System Staff Assistant. The position is immediately available and will be located at our National Division Office in Novi, MI with a starting salary of \$70,897.81.

**An Information System Staff Assistant is responsible for Server Support and other duties assigned by the National Division Secretary Treasurer. Candidates must have a Bachelor's degree in Information Systems and be customer service oriented. Support duties include management of and technical assistance with servers, networking and disaster recovery.**

**BMWED will provide job training, a relocation package and other benefits.**

**The BMWED is an Equal Opportunity Employer. Resumes should include details of your work history, union activity, education, training and a sample of your writing skills.**

**You may email your resume to [contactus@bmwe.org](mailto:contactus@bmwe.org), or by U.S. Mail at:**

**Job Opening - BMWED**  
c/o Perry K. Geller, Sr.,  
Secretary Treasurer  
41475 Gardenbrook Rd  
Novi, MI 48375

WE  
WANT  
TO  
HEAR  
FROM  
YOU

If you have a special hobby or talent, hold public office, or have a story you would like to share, we would like to hear from you. Share your story with our BMWED Brothers and Sisters in the *BMWED Journal*.

Please send us your pictures and brief details along with a name, address and telephone number.

You may email, or send by  
U.S. Mail to:

[cballew@bmwe.org](mailto:cballew@bmwe.org)

Or,

BMWED Journal  
c/o Clark Ballew  
41475 Gardenbrook Road  
Novi, MI 48375-1328





Freddie N. Simpson

# PRESIDENT'S PERSPECTIVE

*Recent events have proven that  
success lies in unity*

Our Brotherhood's recent accomplishments featured on the front page of this Journal — the successful strike action by members of the Northeastern System Division on Canadian Pacific's Delaware & Hudson line and our last-minute, strike-avoiding agreement reached with New Jersey Transit — are two examples of what can be accomplished when workers come together as one.

On the D&H, our Brothers and Sisters were not getting equitably paid in accordance with the collectively bargained agreement. Members there reported inaccuracies on their hourly rates, incorrect or missing payments for holidays and vacations, and denials of health insurance and supplemental sickness benefits while on medical leave or furlough. Obviously, this was a major problem.

Despite repeated attempts to gain meeting with CP management, time drew on with insufficient response. After much deliberation and faced with limited recourse, a surprise strike was called for Monday, March 7.

NSD General Chairman Dale Bogart led his members on a walkout early that morning. Within minutes, every BMWED track worker on the D&H joined ranks and left the job. It was an action that took courage and would not have been successful without the unity of everyone involved. Because every worker

stood down, the strike was a success. By 2 p.m. that very afternoon, CP officials informed the Brotherhood that they would meet the next week and ensure that all employees were paid fairly and accurately.

Later, that very same week, a coalition of 11 rail unions — including the BMWED — spent several days in Newark, N.J. hotel meeting room. For almost five years, union railroaders of all crafts had worked without a contract. Despite two Presidential Emergency Boards making fair recommendations — not perfect, mind you, but reasonable — NJT management and New Jersey Gov. Chris Christie insisted on playing hardball with our members' livelihoods.

Facing a looming strike that would cripple the daily train commute into downtown Manhattan, union leaders and members — including our own Commuter Railroad System Division General Chairman Mick Barrett and BMWED Northeast Region Vice President Seán Gerie — successfully beat back NJT's unfair demands and struck a deal that mirrored closely the P.E.B. #249 recommendations. In doing so, they also avoided a strike — which, while an effective tool, is always a last resort.

Brothers and Sisters, as you can see from these two examples, we must stick together if we are to succeed. Times are tough on organized labor. Our national, state and even local

politics are awash with money from folks who are out to destroy us. It may sound hokey, but it is true. All we have to combat this attack is the strength of each other, united as one.

It is important to remember that strikes are a last-case measure for our Brotherhood. We do not conduct strike-authority votes or take strike actions lightly. A great deal of effort is put forward to avoid having to use a walkout, and only when it is determined that no other course will be effective do we engage in a strike action. The overuse of a strike — much like the overuse of any tool — only diminishes its effectiveness.

On the D&H and the NJT, we were successful in a time when union victories seem to be increasingly fewer and farther between. This is encouraging because it proves once again that solidarity carries the day. It was not just the officers who accomplished these two feats. It was the members, our Brothers and Sisters. It was all of us. The support that came from all corners of our Brotherhood was evident in phone calls, emails, and messages on our BMWED Facebook page. Our Brothers and Sisters on the D&H and the NJT were buoyed knowing that they had support from BMWED members on every railroad, in every system, nationwide.

This brings me to our Brotherhood's Communication

Action Team, or C.A.T. My hope is that you're familiar with it by now. A year has passed since we first put the C.A.T. in motion, and we are making encouraging progress. We have identified 540 "Front Line Communicators," rank-and-file members from all across the country that have demonstrated the initiative to take on an increased and important role in the union. Out C.A.T. Internal Organizers have visited 780 worksites across the United States, and collected over 9,000 surveys and contact information from members in regard to National Bargaining.

In the coming weeks, the C.A.T. will launch a full-scale education and action program around defending our healthcare and beating back the carriers' attacks on our benefits. To defend what we have — which was the overwhelming feedback of members in the surveys — we will have to prepare. We'll start with conversations about our benefits, how they were one, and who our enemies are who want to take them away. By summer, we anticipate a day of national unity where we show the carriers that the BMWED is united on protecting our healthcare.

In closing, it is important to remember that our success hinges on our ability to stick together, united and committed to pushing forward as one. This is what brought us to strength in the past and it is what will continue to prosper us in the future.





# ROLL OF HONOR



J B ABILA JR	USD	0941	2006
BRADLEY S ADDINGTON	ASF	0571	2006
PARIS E ADKINS	AF-SE	0112	2005
ANDY L ADKINS	SOU	0586	2006
LORING R ALDRIDGE	USD	1054	2005
JORDAN L ALDRIDGE	AT&SFF	2033	2006
BRENT A ALDRIDGE	ASF	1464	2005
FABIAN E AMARO	AT&SFF	2416	2005
FRANCISCO J ANAYA	USD	0968	2005
CLAY F ANDREWS	PENN	0935	2005
MICHAEL J ARNOLD	AT&SFF	2413	2005
MICHAEL C ARNOLD	AF-SE	1038	2005
ANDREW R ARSTEIN	USD	0874	2006
TRACY S ASHER	AF-SE	1155	2005
ALEX S AULTMAN	SOU	0619	2005
MARK A BAILEY	ASF	0551	2005
ANDRE L BALL	AF-SE	0338	2005
GARY E BALL	USD	1381	2006
JAMES J BARB II	SOU	2003	2006
RHETT T BARKER	USD	0968	2005
DERRIK J BARNES	AT&SFF	2403	2005
BRADLEY R BARNETT	AT&SFF	2433	2006
WILLIAM C BATE JR	USD	1381	2005
TERRY G BAXLEY	SOU	0808	2005
PAUL BEAUPARLANT	PENN	3011	2006
A J BENSON	AF-SW	1549	2005
CHARLES D BERKENBILE	AT&SFF	1251	2006
CLINTON J BERRY	AF-SE	1355	2005
BRENT L BERRY	USD	0085	2006
GREGORY D BETHEA	AF-SE	0563	2005
BRYAN K BLACK	ASF	1464	2005
JUSTIN M BLANKENSHIP	ASF	1464	2005
JAMIE E BOLES	SOU	0645	2005
TYLER D BOOKER	BURL	1108	2006
STANLEY G BOOKOUT	AT&SFF	1251	2006
JAMES S BOREMAN	CRSF	1532	2006
TERRY R BOWENS	ASF	1464	2005
JOSEPH M BOWLES	ASF	1464	2005
TATE L BOWLES	USD	1402	2005
GORDON E BOYLAN	AT&SFF	2600	2006
JUSTIN BRADFIELD	AF-SE	0665	2005
HESS V BRANCH	AF-SE	0695	2005
GENE D BRANTLEY	AF-SE	0702	2005
BLANE BREEDING	ASF	0571	2006
JOHN P BREEN	BURL	1108	2005
BILLY R BREWSTER	ASF	0571	2005
TYLER K BRIMHALL	USD	0918	2005
TEOFILO K BROOKS	AF-SW	2286	2006
JOHN P BROWN	AF-SW	0601	2006
SCOTT A BROWN	USD	0914	2006
ROBERT M BRULIMSKI	PENN	3041	2006
MATTHEW S BRYANT	AF-SE	0075	2005
ROBERT BUCHANAN	BURL	1351	2006
EVAN J BYRD	AF-SE	1854	2005
HEATH R CAMPBELL	ASF	0580	2006
JAMES T CAMPBELL	USD	0757	2005
KURT CAPUTO	PENN	3014	2006
JOSE L CARDENAS	USD	0134	2005
DIEGO J CARDENAS	USD	0968	2005
JASON C CARR	AF-SE	2163	2005
CODY L CARRIER	AT&SFF	2404	2005
JASON N CARTER	SOU	0536	2006
DORSEY W CARY III	USD	1216	2006
BRYAN R CASE	AT&SFF	2412	2005
JAMES CHAMBERLAIN	AT&SFF	2403	2005
JEFFREY CHLEBOWSKI	WCSD	2927	2005
DUSTIN S CHRISTENSEN	USD	1227	2005
DONALD L CHRISTIAN JR	ASF	0571	2006
JOHN C CHRISTIE	AT&SFF	2414	2005
CALE R CLEMENTS	AT&SFF	0493	2005
JOHN F CLINE	AT&SFF	2600	2006
RUSSELL E COBB	AF-SE	0499	2005
RYAN D COLSON	AT&SFF	2413	2005
BRENNAN R COMER	ASF	0577	2005
CARL J COOK	BURNOR	0104	2005
DONALD L COOK JR	AF-SE	0562	2005
JEREMY J COOP	USD	0325	2005

EARLOW M COSTINE	AF-SE	0547	2005
GARY M CRAIN	ASF	1701	2005
SIMS D CRAWFORD	SOU	0808	2005
MATTHEW D CRAWFORD	BURL	0800	2005
BRIAN M CURINGTON	AT&SFF	0361	2006
STEVEN D CYRUS	ASF	1464	2005
THOMAS J DAIGLE JR	AF-SW	1252	2006
RON A DALE	USD	0216	2005
DOUGLAS R DANIELSON	USD	1246	2005
TRAVIS R DAVID	AF-SE	2705	2005
REYES J DAVILA	USD	1402	2005
MARK S DAVIS	AF-SW	1012	2006
JOSHUA C DAVIS	AF-SE	2162	2005
RONALD D DAVIS JR	USD	0874	2005
JAMES L DAVIS JR	PENN	3011	2006
JOSE L DE DIOS	USD	0134	2005
DORRI DE LOACH III	AF-SE	2163	2005
JONATHAN W DEEL	SOU	0034	2006
LONNY O DELLALUCIA	USD	1227	2005
BLAKE E DEMENT	AT&SFF	2600	2006
JOSHUA E DENNEY	SOU	0636	2005
CHRISTOPHER R DIGIOCOMO	PENN	3041	2006
STEVEN L DILLARD	ASF	0599	2006
LEROY DOBBINS JR	AF-SW	1058	2005
MARK A DOSS	ASF	1464	2005
PAUL N DOWDY	AF-SE	0075	2005
GARY L DRAKE	AF-SE	1155	2005
KEITH E DUGGER	SOU	0586	2006
BYRON W DUNWOODY	ASF	0301	2006
KEVIN L DUROSSETTE	AT&SFF	0518	2006
DEVIN D DWIGHT	SOU	1618	2005
ARTHUR W EAGEN	AF-SE	0702	2005
STACY D EDGAR	AF-SW	0675	2005
NICHOLAS L EHLERT	AF-SW	1058	2005
ROBERT B ELDRIDGE	SOU	0636	2005
KENNETH R EMERSON	AF-SE	1038	2005
THOMAS A FACKLER	AF-SE	1155	2005
MATTHEW G FERRI	AF-SE	0409	2005
KYLE E FIFE	USD	1096	2005
THOMAS W FISHER	USD	1402	2005
JAMES L FITTING	USD	1227	2005
DANIEL B FORNEY	USD	0107	2006
ROBERT A FRANKLIN	SOU	0567	2005
JARROD E FRAZIER	USD	0508	2006
BRANDON K FRESQUEZ	BURL	1351	2006
KENNETH E FRIES	USD	0899	2005
G R GALLARDO	AF-SW	1571	2005
MIGUEL A GARCIA	AF-SW	1338	2005
JOSEPH GARCIA	AT&SFF	2410	2006
BRANDON J GARR	USD	1227	2005
STEVEN M GILLASPY	AT&SFF	0493	2006
ERIC E GILLESPIE	AF-SW	1058	2005
DANIEL A GILLIARD	AF-SE	2163	2005
TIMOTHY K GOBER	AT&SFF	2033	2006
ANTHONY L GODDARD	USD	0508	2005
HARRIS GOLDBLATT	AF-SW	0522	2005
REUBEN GOMEZ	USD	0918	2005
TRAVIS P GORACKE	BURL	1316	2006
GAYLON D GRAVATT	AT&SFF	2403	2005
JOSEPH L GREENHALGH	USD	0968	2006
JAMES F GREGORY	CRSFNP	1664	2005
JOSHUA J GRIDER	ASF	0226	2006
TODD W HAARSTICK	BURL	0420	2005
THOMAS E HAGEMASTER	CRSF	0507	2005
DAVID E HALL	PENN	3043	2005
ROBERT A HALL	USD	1381	2005
BEVIN L HALL	AT&SFF	0493	2006
PHILIP R HAMILTON	AT&SFF	0493	2005
GARY A HAMMONS JR	ASF	1464	2006
CRAIG T HAMPTON	CRSF	1396	2006
MARION L HANNAH JR	SOU	0536	2005
CHARLES R HARDIN	ASF	0551	2005
JOHNNY HARPER	AT&SFF	2600	2005
DAVID G HARRELL	AT&SFF	2413	2005
SAMUEL HARRIOTT JR	AF-SE	2167	2005
CHAD L HATCH	USD	0757	2005
JERRY D HAWKINS	ASF	0662	2006
FREDERICK L HAYDEN	ASF	0599	2006
ROGER HAZELWOOD JR	AF-SE	0075	2005
KURTIS L HEALEY	AF-SW	0601	2006
CHARLES W HEIDEL	SOU	0546	2005
CHRIS HERNANDEZ	USD	0134	2005
HUMBERTO H HERRERA	USD	0085	2006
JUAN R HERRERA-CHAVEZ	USD	1096	2005
AARON C HERZKA	PENN	3005	2006

STEVE HIETT	CRSF	1562	2006
DICK R HIGGINBOTHAM	USD	0922	2006
MATTHEW S HILL	ASF	1464	2005
JOHN M HILL	USD	1381	2005
DWAYNE M HINES	AF-SE	0993	2005
HUNTER P HOBSON	AF-SE	1355	2005
MATTHEW S HOGUE	USD	0922	2006
QUANNAH J HOLCROFT	AF-SW	0345	2005
JAMES P HOLLAND	ASF	1464	2006
GREGORY R HOLLOPETER	USD	1381	2005
NATHAN D HOLMES	CRSF	0991	2005
JEREMY M HOLTON	BURL	0014	2005
ARTHUR R HONEYFIELD	USD	1196	2005
K E HORN	AF-SW	1507	2005
EDZAL HORN JR	AF-SE	0225	2005
TOMMY R HOUSTON	AF-SW	0203	2006
BRIAN J HOWE	PENN	0935	2006
ADAM V HOYT	USD	1054	2005
JOSEPH A HUEBL	AT&SFF	2404	2005
JASON K HUGHES	AT&SFF	0493	2006
PAUL W HUGHES JR	AF-SE	1155	2005
JASON M HUNT	ASF	0551	2005
LAWRENCE E HUNT III	AT&SFF	2404	2005
CHRISTOPHER HUNTER	AF-SE	0225	2005
WILLIAM L HURD	AT&SFF	0518	2006
DWAYNE HUTCHINSON	PENN	3097	2005
WESLEY R HUTCHISON	AF-SW	0203	2006
MICHAEL J HYATT	AF-SE	0562	2005
MATTHEW C HYDE	AT&SFF	0493	2006
STEVEN C JACKSON	AT&SFF	2402	2005
SCOTT E JOHNSON	SOU	0525	2005
LUCIUS A JOHNSON	BURL	2621	2005
PHILLIP O JONES	USD	1847	2005
CHRIS H JONES	AT&SFF	1251	2006
KIMBALL JONES	AF-SW	1252	2006
LEMUEL I JONES	SOU	0546	2005
FURMAN W JONES	AF-SE	1993	2005
ERIN M JORDAN	AF-SE	1038	2005
MARCUS JOSEPH	AF-SW	1012	2006
DUSTIN J KELSCH	USD	0968	2005
K D KELSO	USD	1381	2005
PAUL E KETTNER	BURNOR	0104	2005
KEVIN K KINARD	AF-SW	1012	2006
CURT A KINCAID	AT&SFF	2403	2005
BRANDON C KING	AT&SFF	2600	2006
MICHAEL KING	SOU	0808	2005
LESLIE G KINSEY	AT&SFF	2413	2005
JOSEPH C KIRKPATRICK	AT&SFF	2600	2006
JOHNATHAN D KNOWLES	SOU	0567	2005
MARK J KNOX	ASF	0226	2005
BENJAMIN T LACROIX	USD	0342	2005
ROGEL S LAGPACAN	AT&SFF	2410	2005
WESLEY C LAMBERT	AT&SFF	2033	2006
JEREMY A LANDERS	AT&SFF	2411	2005
RUSSELL T LANE	AF-SW	1058	2005
LORENZO LAUREANO	USD	0407	2005
GERALD W LAWSON	SOU	0586	2006
ALAN B LEE	AF-SE	0562	2005
DONALD G LEE	AT&SFF	0493	2006
KELLY J LEE	USD	0757	2005
STACY M LENERS	USD	1133	2005
JOSEPH L LESLIE	PENN	3061	2005
DALE B LEWIS	AF-SE	0547	2005
WILLIAM A LEWIS	BURNOR	0236	2005
TRAVIS M LIBBY	N E	0633	2005
JED D LIGHT	CRSF	2780	2006
JAKE L LILYA	USD	1402	2006
LANCE E LINCOLN	AT&SFF	2404	2005
FRANK F LION	AT&SFF	1082	2005
DWIGHT B LLOYD	USD	0918	2005
JEFFREY J LOEHR	WCSD	2927	2006
CLIFFORD D LOGAN	AF-SE	0671	2005
RICARDO O LORA	USD	0134	2005
TIMOTHY D LUCHIEN	USD	1096	2005
JONATHAN D LUSK	ASF	0551	2005
CHARLES J MADER	BURL	1108	2005
ANDREW P MADZIN	CRSD	2906	2006
BLAKE M MARCH	USD	1402	2005
MARTIN E MAREK	ASF	0551	2005
ANTHONY MARIN	AT&SFF	2413	2005
KENNETH M MARLOW	USD	0134	2005
CHARLES B MARSHALL	USD	0216	2005
RODERICK K MATTHEWS	AF-SW	1058	2006
DONALD W MC ANALLY	AT&SFF	2033	2006
JAMES MC BRYDE JR	AF-SE	1643	2005
KEVIN L MC CARTY	PENN	3061	2006
PARIS A MC CLAIN	SOU	0523	2006
THOMAS E MC COLL	AF-SE	0563	2005
KEVIN O MC COY	ASF	1464	2005

IRELAND MC COY II	ASF	0580	2005
CODY B MC DONALD	AF-SW	1099	2005
DAVID F MC KENZIE	CRSF	0201	2005
JAMES MC KENZIE II	AF-SE	1038	2005
ROBERT A MC KINNEY	AF-SE	0885	2005
JACOB A MEDLIN	SOU	0673	2005
DANIEL MENA	USD	0968	2005
C A MENCHACA	AF-SW	0644	2005
T M MENCHACA	AF-SW	0644	2005
JOSHUA B MERRIER	BURNOR	0320	2006
CRAIG MILLER	PENN	3011	2006
MICHAEL W MILLER	USD	1227	2005
ANTHONY R MILLER	USD	1096	2006
JEREMY S MILLS	AF-SW	0450	2006
GRADY T MILTON JR	CRSF	0201	2005
RICHARD L MITCHELL	ASF	0599	2006
SCOTT K MONAHAN	CRSF	0201	2005
DONALD A MOORE	AF-SW	1012	2006
STEPHEN B MOORE	AF-SE	0562	2005
MICHAEL T MORRIS	AT&SFF	1251	2005
CHRISTOPHER L MOWERY	USD	0968	2005
ELIAS J MUKHAR	USD	0968	2005
JAMINSON MULLINS	AF-SE	1745	2005
JEETINDRA MUNGROO	AF-SW	1058	2005
BILLY V MURPHY	AF-SW	1058	2005
WILLIAM B MURPHY	ASF	1464	2005
KYLE T MURPHY	AF-SE	0225	2005
AARON R MURRAY	USD	2853	2005
TRAVIS E MUTH	USD	0134	2006
JEFF A NASH	USD	0407	2005
RAMIRO NAVA	USD	1227	2006
RONALD NESBIT JR	CRSF	1532	2005
JAMES W NEVINS	AT&SFF	2419	2005
JANDREAU E NEZ	USD	1020	2005
MATTHEW J NICHOLSON	USD	0107	2006
JAMES E NORRIS	AF-SW	1012	2006
JOHN M OLDHAM	AT&SFF	0526	2005
JUAN C ORDAZ	USD	0134	2005
MICHAEL T ORE	USD	1196	2006
ALEJANDRO B ORTEGA	USD	0085	2006
FREDDIE J ORTEZ	USD	0216	2006
ARMANDO B PARGA	AF-SW	1175	2005
ALFRED PARKES III	AF-SE	2162	2005
CHAD C PASTURCZAK	USD	1847	2005
AULYSSE PAUL	CRSD	2905	2006
KEVIN L PENROD	AT&SFF	1251	2006
ALFREDO PEREA	USD	1227	2005
JERRY J PEREZ JR	BURL	1351	2006
ROBERT E PERRY	AF-SW	1715	2005
WESLEY E PETERS	CRSFNP	2307	2005
ANDRE D PHELPS	AF-SW	1058	2005
JERRY W PHELPS	CRSF	1629	2006
DANIEL W PHILLIPS	AT&SFF	0493	2006
JUSTIN A PHILLIPS	ASF	0551	2005
JASON E PIGG	AT&SFF	2413	2005
JUSTIN S PLYBON	ASF	1464	2005
TRAVIS J POWELL	USD	0899	2005
ZANE A POWELL	USD	0899	2005
JASON PRICE	AF-SE	0562	2005
WILLIAM M PRICE	AT&SFF	1600	2006
CHARLES C PRICE JR	ASF	0568	2005
MARK A QUINTON	AT&SFF	2409	2005
KENNY L RABE	AT&SFF	2406	2005
CHARLES L RAINSBARGER	AF-SW	0996	2005
LUIS F RAMOS JR	AT&SFF	2410	2005
JEREMY A REYNOLDS	USD	1216	2005
DOUGLAS W RHODES	AF-SE	1857	2005
JUSTIN C RICE	AF-SE	0702	2005
ANDRE A RICHARDS	CRSF	0201	2005
ROBERT C RIEVES	AF-SW	1041	2006
CHRISTOPHER T RIGBY	USD	0437	2005
MIGUEL A RIVAS	USD	0508	2005
KEVIN L ROBERTSON	AF-SE	0424	2005
CHARLES W ROBISON	AT&SFF	0518	2006
HANK W ROMINE	USD	0134	2005
JOHN R RONALD	AF-SE	1432	2005
TEDDY P ROSE	AF-SE	0916	2005
SHAUN A ROSE	SOU	0627	2005
CALVIN L ROSS	USD	0216	2005
JODY L RYAN	SOU	0567	2006
DAVID E SABBATH	AF-SW	1193	2005
DANNY C SACKETT	AT&SFF	2413	2005
JOEANGEL C SALINAS	USD	1096	2006
JAMES G SAMONS	AF-SE	0225	2005
WALTER J SANDERS	AF-SW	1058	2005
SY SANDERS	ASF	0551	2005
TIMOTHY B SANDERS	AT&SFF	2407	2006
JAY D SANTERO	USD	0899	2005





Roll of Honor, From Page 15

ANDRE G SAUNDERS	ASF	0599	2006
ROBERT J SCHMITT	CRSD	2906	2006
TIMOTHY J SCHWEITZER	USD	0473	2006
GUILLERMO SERRANO JR	USD	0134	2005
ANTHONY N SHACKLEFORD	CRSD	2905	2006
JASON L SHAWBACK	AF-SE	0409	2005
STEVEN D SHAY	AT&SFF	0518	2006
CLIFF H SHULL	USD	0508	2006
JAMES J SIMPKINS	ASF	0613	2005
PHILLIP A SMITH	AT&SFF	2403	2005
JASON J SMITH	USD	0899	2005
DAVID C SMITH	CRSFNP	1362	2005
PHILLIP J SMITH	AF-SW	0927	2005
WILLIAM D SMITH	USD	1227	2005
JOSIAH Q SNEDEKER	ICGF	2834	2005
THOMAS M SNIDER	AF-SE	0061	2005
ANDRES SORIANO	USD	0085	2006
JOSHUA D SPEARS	AF-SE	2705	2005
BRADLEY J STARN	USD	0381	2005
TIMOTHY W STEWART	AF-SW	0675	2005
JUSTIN B STILWELL	USD	1096	2006
DONALD R STITH	AF-SE	0665	2005
BLAIR M STOWERS	AT&SFF	2600	2006
SHON L STRIPLING	SOU	0808	2005
JOSEPH H STROUD	AF-SE	0916	2005
KEVIN STUBBS	AF-SW	1099	2005
SARAH J SUMMERS	BURNOR	0236	2005
JOEL H SWEET	AF-SE	1038	2005
TAJ S THOMAS	CRSF	0201	2005
KIRK D THURGOOD	USD	1227	2005
JESUS I TORRES	USD	0134	2006
JAMES T TUCKER	AF-SE	2163	2005
CORNELL TUCKER	PENN	3089	2006
BENJAMIN J TURNER	AT&SFF	2033	2006
JAMES M TUTTLE	AF-SE	0562	2005
LLOYD D UHLENKOTT	USD	1381	2005
URIEL VALENCIA-ALVAREZ	USD	0107	2006
CLINT J VAUGHAN	AT&SFF	2433	2006
JOSH D VINCENT	USD	0216	2005
JOE L VOGELE	AF-SW	1025	2006
JAMES P WALKER	AT&SFF	2407	2006
TRENT S WARD	USD	1227	2005
DAVID WARREN	SOU	0536	2005
DONNIE R WEBER	AF-SE	0225	2005
CHARLIE C WEBSTER	BURL	2852	2005
DAVID A WERBER	BURL	1351	2006
ZACHARY L WHITE	BURL	1351	2006
MICHAEL L WHITTEN	AT&SFF	2413	2005
ALFRED E WILBURN	ASF	0301	2005
TYLER J WILLIAMS	USD	1227	2005
TULLY R WILSON	AF-SW	1058	2006
RICKY W WILSON	AF-SW	1012	2006
WYATT W WILSON	USD	0918	2005
ALAN L WIMMER	USD	0968	2005
HENRY A WING	BURL	1108	2006
RICHARD A YATES	ASF	0580	2005
FILIBERTO ZAMARRIPA	USD	1071	2005
AXEL ZAMORA	AT&SFF	2419	2005
CRAIG C ZEIGLER	PENN	3041	2006
JOSE L ZUAZUA	USD	0922	2006



ANGEL F ACEVEDO	USD	0407	1995
MITCHELL L ADAMS	AT&SFF	2402	1995
JOSEPH AHR	PENN	3068	1995
GEORGE R AMOS	PENN	3068	1995
ARTHUR V BALDERAS	AT&SFF	2419	1995
SCOTT D BAROCH	BURNOR	1092	1995
ROY T BEGAY	T&SFF	2400	1996
ROBBIN D BELL	AF-SW	0376	1995
MICHAEL A BIANCO	BURL	1903	1996
CHRISTOPHER C BILLET	PENN	3041	1996
TIMOTHY J BOWERS	PENN	3014	1995
JEFFREY A BRATTON	USD	1196	1995
CHARLES L BRENT JR	PENN	3041	1996
JOHN K BURCH	AT&SFF	2402	1995
GARY W CASE	AT&SFF	2404	1995
STEVE L CORDOVA	AT&SFF	2417	1995
CHARLES H CRAIG	USD	0899	1995
ROBERT A CURRY	PENN	3089	1996
STEVEN L DINGMAN	AT&SFF	2418	1995

BRANDON T DODD	AT&SFF	0361	1995
ROBERT D FLETCHER	BURNOR	0159	1995
CHRISTOPHER J FORD	BURL	1302	1995
STEVE A FUENTES	USD	0508	1995
DENNIS R GILBERT JR	PENN	3041	1996
PETER GILLIAM	USD	0508	1996
SANTIAGO E GONZALES	AT&SFF	2419	1995
WILLIAM GONZALES JR	AT&SFF	2417	1996
TERRY L HALL	AF-SW	1353	1995
SCOTT A HARDISTY	AT&SFF	2401	1995
THOMAS N HAYES	PENN	3041	1996
ALBERT J HERRERA	USD	0779	1995
PHILLIP E HEUSLER	AT&SFF	2419	1995
JAMES W HOLDEN	PENN	3041	1996
MICHAEL S HOLLAND JR	BURNOR	0104	1995
RICHARD E HUSS JR	AT&SFF	2401	1995
MARK D JACKSON	AT&SFF	1251	1996
ERVIN D KIKER	AT&SFF	2405	1995
JEFF D KILE	AT&SFF	2413	1995
JESSIN D KRUCKENBERG	AT&SFF	2414	1995
ROBERT L LIGATTI	PENN	3089	1996
ANTHONY B LOCKE	CRSFNP	1362	1995
JACKIE D LOWERY	SOU	0636	1995
TODD P MAINS	BURNOR	0389	1995
CHRIS D MARCUM	AT&SFF	2418	1995
RAMON MARRUFO	AT&SFF	2419	1995
AUDON R MARTINEZ	AT&SFF	2419	1996
NICHOLAS C MAZZILLI	PENN	3068	1995
BRIAN P MC CARTHY	PENN	3089	1996
JESUS M MEJIA	AT&SFF	2419	1995
JAVIER A MELENDEZ	USD	0941	1996
CHRISTOPHER D MILLS	BURNOR	1763	1995
JEREMY A MOLLOY	AT&SFF	2402	1995
GERALD G MORRIS	BURNOR	1763	1995
DAVID M MORRIS	BURNOR	1326	1995
NAZARIO G NORIEGA	AT&SFF	2417	1996
DEAN H PACHUR	BURNOR	1426	1995
MIGUEL PALOMINO JR	AT&SFF	2419	1996
DAMIAN M PIRELLI	PENN	3012	1996
BELFRED T PRYER SR	AF-SW	1176	1995
JEFFREY L QUANSTROM	AT&SFF	2418	1995
DANIEL R QUIROZ	USD	0508	1995
CHRISOPHER READING	PENN	3089	1996
MIKE L REIF	AF-SW	1254	1995
SANTIAGO RIVERA JR	USD	0508	1995
W L ROBERTS	AF-SE	0547	1995
THERRY RUCKER III	AT&SFF	2413	1995
CARLOS H SALDIVAR	AT&SFF	2413	1995
BARRY L SANDERS	AT&SFF	2402	1995
RICK M SANDOVAL	AT&SFF	2413	1995
JEFFRY J SHORTER	AT&SFF	2417	1995
CURTIS D SHUPE	AT&SFF	2404	1995
LEONARD C SMITH	BURNOR	0159	1995
GERRY L SMITH	BURNOR	1092	1995
ERIC M SONDGEROTH	BURL	1302	1995
BRYAN G STEELE	PENN	3041	1996
STEVEN C STONE	N E	2957	1995
BARTIMUS THYMES	AF-SW	1176	1995
JASON S TOBIAS	USD	1196	1995
LARRY TRINIDAD	USD	0227	1996
DENNIS TUOHEY	PENN	3005	1996
JAMES M VANDERFORD	PENN	3041	1996
ARTURO D VENTURA	AT&SFF	2419	1996
M N VINSON	ASF	1464	1995
DARRELL M WANECK	AF-SW	1099	1995
DONALD J WHALEN II	AT&SFF	2417	1995
CLARENCE YAZZIE	USD	1020	1995
TERRY W ZAPALAC	AF-SW	1099	1995



JOSEPH ANANIJEW	CRSD	2906	1985
ALLAN M BLAND	AF-SE	2067	1986
JAMES D BOTHUN	SOU	0523	1985
A W BROWN	SOU	0536	1985
TIMOTHY CHICIRDA	CRSD	2910	1985
NICHOLAS P DEROBERTIS	CRSD	2905	1985
ALEX E DICKERSON	SOU	0660	1985
JERRY L DOWNS	BURL	1903	1985
VINCENT ENDRIK	CRSD	2910	1985
JOSEPH ESPOSITO	CRSD	2906	1985
B F GORE	SOU	0536	1985
SAMUEL HELLER	SOU	1618	1985
STEVEN J HOFFMAN	CRSD	2906	1985

HENRY A JOHNSON	SOU	0523	1986
DAVID L KEMP	SOU	0660	1985
ART L MALDONADO	USD	0508	1986
KENNETH R MANLEY	USD	1133	1985
ROBERT E MC CARTHY II	PENN	3068	1986
KEVIN L MERCER	AF-SW	0927	1985
GERALD W MILLER JR	SOU	0523	1985
BRADLEY E NOBLES	AF-SW	2432	1985
F PARHAM	SOU	0536	1986
EDGAR J PHILLIPS JR	SOU	0660	1986
PAUL H SEEGARS	SOU	0523	1985
DAVID A SMALLWOOD	SOU	0302	1985
MARK J SWEENEY	CRSD	2906	1985
A J YOUMANS	SOU	0619	1985
STANLEY J ZERINGUE	SOU	0660	1985



JOHN S ABEYTA	AT&SFF	0204	1975
WILLIAM M ALERT	CRSF	0991	1976
HERMAN ALEXANDER	PENN	3075	1975
KEVIN D ALTMAN	PENN	3008	1975
ROBERT J ARNOLD	BURL	1108	1976
DAVID M BAKER	PENN	3047	1975
JOE A BARAGRY	AT&SFF	2418	1976
FRANCIS L BARDO	PENN	3030	1976
RAMON L BARNES	CRSFNP	1664	1975
LEE V BARNETT	SOU	0525	1975
KEVIN R BELLINSKI	PENN	3018	1975
RICHARD P BENSON	ASF	0226	1975
RODNEY P BIRCH	PENN	3060	1975
LEONARD BLACKIE	USD	0918	1976
SAMUEL BLACKIE	USD	0918	1976
ANDERS BOGAN	N E	0090	1975
JOHN A BOGETTI	PENN	3098	1975
HARRY A BROWN	PENN	3047	1975
CHARLES R BRUMLEY JR	AF-SW	0564	1975
JOSEPH E BRYAN	CRSF	1037	1976
GUY L BRYDGE	PENN	3005	1975
DONALD J BUCCI	CRSD	2910	1976
WESLEY M BURTON	PENN	3094	1975
STEVEN A BUSCH	USD	0278	1975
DAVID G CABLE	USD	0239	1975
MICHAEL CALLAHAN	CRSF	0612	1975
ERNEST B CAPPS	AF-SE	0075	1975
SCOTT J CARLSON	CRSF	1900	1975
WILLIAM D CARROLL	PENN	3005	1975
JEFF J CARSWELL	USD	0437	1976
DAVID H CASTRO	BURL	1074	1975
KENNETH R CHAFFINS	PENN	3097	1975
JAMES R CHRISMAN	SOU	0302	1975
ORRIN P COLLINS	ASF	0551	1975
DANNY H COX	ICGF	0616	1975
RICK L CRENSHAW	AT&SFF	1251	1975
WILLIAM W CRIM	AT&SFF	2410	1975
FRANK P CULKIN	CRSD	2906	1975
JEFFREY B CYPHER	PENN	3047	1975
ROBERT D DAILEY	PENN	0400	1976
STANLEY F DAVID	AT&SFF	2417	1975
KEITH F DAVIES	PENN	3014	1975
ROBERT W DAVIS	PENN	3080	1976
MICHAEL E DEMBOWSKI	PENN	3043	1975
JOSEPH M DI BONAVENTURO	PENN	3089	1975
ROBIN R DIETZ	PENN	3008	1975
WARREN J DISMANG	AT&SFF	2409	1975
WILLIAM A DOOLING	PENN	3014	1975
DANA E DUNCAN	PENN	3017	1975
RODNEY G EHMEN	BURL	1320	1975
DANIEL W ELLENBERGER	PENN	3075	1976
RAYMOND J FISHER	BURL	1965	1976
NICHOLAS FLOCCO	PENN	3068	1975
ROBERT C FLOYD	USD	0968	1975
LARRY L FOUNTAIN	CRSF	1037	1975
DWIGHT L FOUTCH	BURL	0798	1975
RAYMOND S FOUTS	BURNOR	1763	1975
WILLIAM A FREDIEU	AF-SW	0564	1976
STEVE G FRISBEE	SOU	0525	1976
LUIS E GALINDO	USD	1862	1975
JUAN R GARCIA	BURL	1302	1975
JOSEPH J GAYDOS	PENN	3047	1975
KEITH GAYHART	PENN	3043	1975
WILLIAM H GEARHART	PENN	3030	1975
VICTOR J GERARDO	AT&SFF	0204	1975
THOMAS L GILT	CRSF	1900	1976

BRIAN B GONZALES	USD	1517	1975
HENRY W GONZALES	AT&SFF	0204	1975
RAYMOND E GORDON	USD	0343	1976
WALTER A GRAY	PENN	3018	1975
THOMAS H HARBO	PENN	3075	1975
MARK S HAY	CRSF	1056	1975
DARRYL K HELLER	CRSF	1657	1976
STEVE HERMILLER	AF-SE	1377	1975
LEOPOLDO HERRERA	USD	0922	1975
GREGORY HILL	PENN	3075	1975
GERALD D HODGES	PENN	3014	1975
WILLIAM D HODGKINS	USD	2854	1976
WILLIAM A HOYT	CRSF	1984	1976
KEVIN J HURLBURT	PENN	3028	1975
STEPHEN IANNELLO	PENN	3039	1975
RICHARD A INCLIMA	N E	1718	1975
JAMES E JACKMAN	AT&SFF	2413	1975
JOHN A JARRELL	CRSF	1900	1975
JAMES W JENSEN	USD	1847	1975
JAMES A JOHNSON	ASF	0551	1975
TERRY L JOHNSON	PENN	3094	1976
ROBERT D JUSTICE	ASF	0571	1975
DANA P LAURIE	PENN	3068	1976
BRUCE F LEBITZ	PENN	0400	1976
DANNY L LIFORD	CRSF	0427	1976
THOMAS E LILLY	AF-SE	1376	1975
STEVE H LINES	AT&SFF	0493	1975
ROBERT E LININGER	PENN	3030	1976
DAVID R LOPEZ	AF-SE	0061	1975
TERRY E LOWMAN	USD	1757	1975
RONALD J LUTKUS	CRSF	0201	1975
DENNIS A MAAHS	BURL	0509	1975
GUADALUPE J MARQUEZ	BURL	0800	1975
JOHN Z MARTINEZ	AT&SFF	0204	1975
PATRICK J MC CARTHY	CRSD	2910	1975
WILLIAM W MC NAVAGE	CRSF	2780	1975
RONALD K MEAD	AT&SFF	2405	1975
ROGER D MERIDITH	ICGF	2834	1975
JACK A MIETTINEN	USD	0473	1975
GLEN T MILLER	AT&SFF	2412	1975
MICHAEL MILLER	PENN	3012	1975
WILLIAM E MILLER	BURNOR	0159	1976
GEORGE C MOLDOVAN	PENN	3094	1975
LEE A MONTGOMERY	USD	2853	1975
AGUSTINE T MORALES	AT&SFF	2418	1975
WAYNE L MORGAN	PENN	3047	1975
MARVIN J NAEGELE	BURL	1105	1975
RAYMOND A NITSCHKE	USD	0899	1975
ROBERT W NUTT	PENN	3012	1975
LOUIE OJEDA	AT&SFF	2414	1975
GORDON D OLIVER	BURL	1832	1975
HISIDRO Q PALAFOX	USD	0107	1975
RALPH D PARSONS	PENN	3075	1975
JOHN PERONI JR	USD	1246	1975
JOHN J PIECZYNSKI	PENN	3014	1975
LOUIS D PINOLA	CRSF	0305	1976
EARL PURNELL III	PENN	3075	1975
ROBERT M RAEHSLER	BURL	0509	1975
TOMMY F RAEMSCH	AF-SW	1099	1975
THOMAS P REZENDES	CRSF	0201	1975
WILLIAM P ROBERSON	USD	0899	1975
CHARLES W ROBERTS	CRSF	1350	1975
HOMERO S ROBLES	AT&SFF	2412	1975
JOSE G RODRIGUEZ	USD	1152	1975
DOUGLAS E ROOF	ICGF	1069	1975
WILLIAM R ROWE	CRSF	2780	1975
GERRY RUEN	AF-SE	1377	1976
JAMES E RUNYON	BURL	1302	1975
DAVID A SABO	PENN	3063	1975
RICHARD G SALAZAR	USD	1517	1975
DALE O SAMUELSON	USD	1216	1975
KARL W SANDT SR	N E	0090	1976
RICHARD A SCHUMACHER	AF-SE	1377	1975
GEORGE A SCHUMAN	BURNOR	0297	1975
MARK A SECCO	USD	0377	1976
STEPHEN L SETTY	PENN	3017	1975
JAMES R SLOAN	USD	0343	1975
GERALD D SMITH	CRSF	0887	1975
LEANDRO R SOSA	AF-SW	0601	1976
CLARK STACY	PENN	3043	1975
ROY I STEWART JR	PENN	3002	1975
JAMES D STIMMLER JR	CRSD	2910	1975
DENNIS R STRALLOW	PENN	3068	1976
BILL A STULL	AT&SFF	2406	1975
LUSTER TAYLOR JR	AT&SFF	2409	1976
KENNETH R THRUSH	PENN	3018	1975
JAMES P TOLBERT	AT&SFF	2409	1975
STEVEN E TOMPKINS	BURNOR	0303	1975
ALLEN D TRAVIS	AF-SE	0916	1975
MICHAEL J VILLA SR	AT&SFF	2401	1975



Roll of Honor, From Page 16

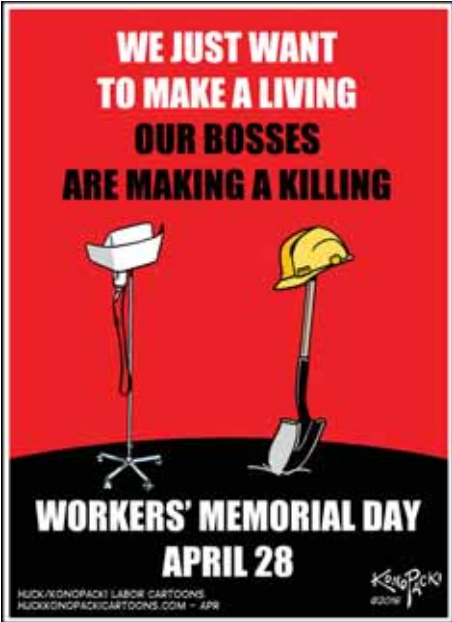
RONALD J WALKER	PENN	3012	1975
MARTIN J WALKER	AT&SFF	2407	1976
MARK S WALUZAK	ASF	2725	1976
CHARLES D WATTS	AF-SE	1745	1975
WESLEY V WEEKLY	CRSF	0505	1975
RICHARD WEGMANN	BURNOR	0297	1976
WILLIAM G WELLS	PENN	3075	1975
DANIEL M WICKS	CRSD	2907	1975
DANIEL J WILLIAMS	CRSF	1900	1975
JOHN A WISEMAN	AF-SE	1745	1975
RONALD J WITKOWSKI	CRSF	0866	1976
DAVID E YAROSH	CRSF	1350	1975
HERBERT I YAZZIE	AT&SFF	2417	1975
FREDRICK A YOUNG	CRSF	1056	1976
MARVIN A ZARING	PENN	3002	1975
ROBERT A ZENNER	USD	2854	1975
DAVID A ZLOMKE	BURL	1214	1975



RODNEY SPEIDEL BURNOR 0303 1965



DONALD A FRIAUF BURL 0420 1955  
DONALD D WILLIAMS BURNOR 0159 1955



Pages 9 - 12 contain the official directory of the National Division and System Officers and State Legislative Directors of the BMWED as of March, 2016. The directory is published twice annually.



Fatality Analysis of Maintenance-of-Way Employees and Signalmen



March 1, 2016

Safety Alert: Roadway Worker Good Faith Challenge

*This Alert highlights the life-saving importance of a good faith challenge and the absolute right of every roadway worker to initiate such a challenge.*

The purpose of a good faith challenge is straightforward: **To provide roadway workers with a non-punitive mechanism for raising and resolving on-track safety concerns so the work can be performed safely.**

A good faith challenge is an opportunity to jointly resolve any on-track safety concerns; it is not a confrontation with your foreman or railroad management. An on-track safety briefing<sup>1</sup> is the first opportunity to make a good faith challenge; however, a challenge can be made at any time. The vast majority of challenges are promptly and fairly resolved between the challenging employee(s) and the Roadway Worker-in-Charge at the job site.

Roadway Worker Protection is governed by Federal Railroad Administration (FRA) regulations, 49 CFR 214, Subpart C, which provides for the good faith challenge procedure. Each railroad has implemented a program under the regulation which affords on-track safety to all roadway workers who perform duties on or in proximity to a track. Each railroad's program must spell out the good faith challenge procedures and the roles and responsibilities of employers and employees in the prompt and equitable resolution of challenges.

The FRA regulation provides, in part:

- §214.311(b): Each employer shall guarantee each employee the absolute right to challenge in good faith whether the on-track safety procedures to be applied at the job location comply with the rules of the operating railroad, and to remain clear of the track until the challenge is resolved.
- §214.311(c): Each employer shall have in place a written procedure to achieve prompt and equitable resolution of challenges made in accordance with §§214.311(b) and 214.313(d).

<sup>1</sup> The FAMES Committee found that insufficient or nonexistent on-track safety briefings or re-briefings were possible contributing factors in 19 (46%) of the analyzed fatalities.

Change of Address Request

Please remember to notify your System Office or the National Division of any change of address or telephone number. It is vital that this information be kept current. Railroad employers do not always provide this information to the BMWED. Phone numbers can be found at [BMWED.org](http://BMWED.org).







# Apple Setup Instructions

From your Apple device, open the App Store, single click the Search button that is in the bottom, right corner. At the top of the screen, type "rss" in the search field and click Search. Scroll down the results until you get to XFeed RSS Reader and click it. You will be presented with more info on the application. Single click the Free button so it changes to say Install. Single click the Install button so the app is added to your phone. Once finished, click the icon to start the app. Single click the Plus button at the bottom of the screen and type <http://www.bmwe.org/rss.xml> in the feed URL box. Single click Search so the feed can be found.

# Android Setup Instructions

Open the Market. Single click the Search button in the upper, right hand corner. At the top of the screen, type rss in the search field and click Search. Scroll down until you get to "gReader (Google Reader / RSS)" and click it. Single click the Download button. Single click the "Accept & download" button. Once downloaded click the "Open" button. Select your Google account and click "Allow." Single click the + in the upper right-hand corner and type <http://www.bmwe.org/rss.xml> in the feed URL box. Select Search. Once the feed is found click the + sign to add the feed.



Scan me for instructions to download the app for BMWED news

- §214.313(d): Each roadway worker may refuse any directive to violate an on-track safety rule, and shall inform the employer in accordance with §214.311 whenever the roadway worker makes a good faith determination that on-track safety provisions to be applied at the job site do not comply with the rules of the operating railroad.

**Labor, Management and FRA fully support a roadway worker’s absolute right to initiate a good faith challenge without fear of retaliation or discipline.** FAMES reminds roadway workers and supervisors that the good faith challenge process begins when an employee raises an on-track safety concern.

### Recommendations:

- Employees should remain clear of track until the challenge is resolved.
- All roadway workers should know where to access the railroad’s good faith challenge procedures and understand the resolution process.
- Roadway workers should periodically review the good faith challenge procedures at on-track safety briefings.
- Supervisors and co-workers should actively encourage the use of the good faith challenge.
- Employers should periodically review their on-track safety program to identify and remove any administrative or procedural barriers to the utilization of the good faith challenge.
- While the good faith challenge is specific to Roadway Worker Protection, the FAMES Committee encourages the use of similar concepts to resolve other safety issues.

**Remember: If you are uncertain about your safety, trust your instincts; make a good faith challenge. You may be saving your life or the life of a co-worker.**

*The FAMES Committee consists of safety representatives from a cross section of rail labor, railroad management, and federal regulators. FAMES is a continuous improvement process that relies on the candid sharing of available data and the views of its participants. To enable the process, FAMES explicitly refrains from making any findings regarding whether any past or present practice or protocol satisfies any legal duty or standard of care.*

*The views, opinions, and recommendations contained in this report are those of the FAMES Committee and do not necessarily represent the views, opinions, or recommendations of any specific railroad, labor organization, or governmental agency.*

You can now visit the BMWED on *Facebook* at

**Brotherhood of Maintenance of Way Employes**, and follow us on *Twitter* at

**BMWEDIBT.**



# A Vice President Speaks

A diverse union makes us strong



Roger Sanchez  
Vice President - South Region

One beautiful thing about our Brotherhood is, despite all our variations — our ethnicities, our religions, our hair color, skin color, languages and gender — when it comes to our jobs, our union, and ultimately, our future, we are all in the same boat.

The railroads know exactly how much we cost them. They have it researched down to the penny. One major reason National Bargaining is progressing slowly is because the carriers want to bring our health insurance cost-share to “mainstream norms.” That means they want to reduce the amount we cost them on their account legers.

This sort of accounting does not reflect your personality, morals, values or work-ethic. We are all unique in many fascinating ways, but in the railroads eyes, we are all costing them too much money. In other words, our jobs are a unifying similarity. You might speak English, you might speak Spanish, you might even speak Navajo. But, to the railroads’ ear, you speak “Payroll Expense.”

When I gather with BMWED members at meetings across the U.S., I have the chance to talk with Brothers and Sisters of many different backgrounds and upbringings. On the surface, it seems easy to stereotype the “typical” rail labor member. After all, a “railroader” is a “John Henry,” right? Strong, tough, hard-working. But the truth is, our membership is not easily type-cast. Sure, some of us fit the “John Henry” model. But our Brotherhood is comprised of an incredible wealth of people with unique backgrounds and life-experiences. These differences add to our Union and the collection of our heritages make us stronger. That is why I remain hopeful that more of our diversity will be re-

flected in the future of the BMWED leadership.

As a BMWED Vice President, Teamster Human Rights Commission member and an advisor to the Brotherhood’s Diversity Committee, I’m often in discussions about how our union can utilize all members. As I wrote above, we may be unique individuals, but collectively we are all Brothers and Sisters on the job.

Our union is mindful of including and respecting everyone. I can confidently say that our Brotherhood’s leadership wants to see diversity in its upcoming direction. One of my most important roles on the Diversity Committee is simply encouraging members of all races, backgrounds and gender to become active and strive for leadership positions at the local, system and national levels of our union. We also encourage members to apply for staff positions that become available and are listed in the BMWED Journal and on the BMWED web page.

I remain confident that if any member in any local lodge on every system or federation in this Brotherhood shows initiative and promise, their Brothers and Sisters will vote for and support them — regardless of color, creed or heritage. This is because our members recognize that our commonality outweighs any differences. We are all railroaders and we are in this together.

Today’s diverse population, workforce and communities are here to stay. In fact, this diversity will only increase.

This is the future and our union, with effective leadership, is embracing this range of culture. By doing so, our Brotherhood will grow stronger as a Union!

The BMWED’s leadership opportunities and employment are open to all our members. The Union is You! Anyone of us regardless of race, color, creed, or background can get involved in the Union by attending local lodge meetings, participating in the BMWED’s new internal organizing campaign called the Communication Action Team (C.A.T.), or running for officer positions, starting at your local lodge. I encourage all to do so, because together we are unified, and the Union Makes Us Strong.

## LOCAL LODGES

Please notify the  
BMWED National  
Division of the passing of  
any retired BMWED  
member.

Call (248) 662-2660  
extension 636.



### IMPORTANT ANNOUNCEMENT 2016 LOCAL LODGE OFFICER TRAINING SEMINARS

The dates have been set for this year’s BMWED Local Lodge Officer Training Seminars. They are as follows:

**July 12-13, Charleston, SC**

**August 2-3, Phoenix, AZ**

**October 25-26, St. Louis, MO**

The training seminars are intended to enhance the skills and knowledge of Local Lodge Officers. Seminar attendees will learn how to run effective Lodge meetings, manage Local Lodge funds, encourage greater member participation at local level, and generally become more familiar and inspired to carry our Brotherhood into the future.

The seminar schedule and application forms have been mailed to each BMWED Local Lodge President, Lodge Secretary-Treasurer and Local Chairman. Applications to attend will be accepted on a first-come, first-served basis. Space is limited. Successful applicants will receive written confirmation from BMWED National Division.

For additional seminar information, please contact BMWED Project Coordinator Katie Fruzynski at [katie@bmwe.org](mailto:katie@bmwe.org).

**Do you have an interesting hobby or a great story to tell?  
Pictures from a recent lodge meeting or event? We want to  
hear and see them. Contact the Journal at:  
[cballew@bmwe.org](mailto:cballew@bmwe.org)**





# Statement of BMWED on Amtrak Collision in Chester, PA.

[WASHINGTON] On April 3, 2016, Amtrak Train #89 collided with a backhoe performing track maintenance work in the Northeast Corridor near Chester, Pa. The accident tragically took the lives of two Amtrak track workers and injured approximately three dozen passengers aboard the train.

“The Brotherhood of Maintenance of Way Employees Division (BMWED) mourns the tragic loss of life in Chester, PA. Our thoughts and prayers are with the families of the fallen at this extremely difficult time. We also express our concern for those

passengers on Train 89 who suffered injuries in this tragic accident,” said BMWED National President Freddie N. Simpson. “There have been three track worker fatalities in Amtrak’s Northeast Corridor since March 1, 2016. This is totally unacceptable and points to systemic deficiencies in the safety culture at Amtrak,” Simpson said.

BMWED General Chairman Jed Dodd echoed the concerns about safety culture at Amtrak, stating, “Amtrak has abandoned a close call reporting system that permitted these problems to be identified and

resolved without waiting for fatalities, fired long-service railroad managers without due process, instituted a draconian discipline program designed to intimidate and silence the rank and file regarding safety, put safety training into the hands of trainers with no railroad experience, and hired senior managers who have no experience in operating or maintaining a railroad. This is a recipe for disaster and the blame should lay squarely at the feet of senior management officials responsible for these misguided and regressive policies.”

BMWED is fully cooperating with the National Transportation Safety Board and the Federal Railroad Administration to determine the cause of the tragic accident in Chester, Pa. and prevent recurrence. BMWED remains ready, willing and able to sit down with the senior decision makers at Amtrak and do the hard work necessary to improve safety culture and jointly reestablish a comprehensive safety program for the benefit of Amtrak passengers and employees alike.



**Brotherhood of Maintenance of Way Employees Division**  
**41475 Gardenbrook Road**  
**Novi, MI 48375-1328**



Periodicals Postage  
**PAID**  
Southfield, Michigan  
and additional offices



recycled paper

